

User's Manual

Home Beauty Device

Bloom WR STAR

SI2 PLUS

Table of Contents

Introduction	1
Safety Precautions	1
When Using Outside of Japan	8
Names and Functions of Components	9
Before Use	11
How to Use	13

After Treatment	18
Additional Information	20
• Troubleshooting	20
• Frequently Asked Questions	22
• Product Specifications	23
After-sales Service	24



Introduction

Thank you for purchasing the YA-MAN product.

- Please read this User's Manual carefully for information on how to use the device properly and safely.
- After reading the contents hereof, be sure to keep this User's Manual in an accessible location.
- Make sure to include this User's Manual if you are transferring ownership of the device to another person.

Safety Precautions

- Read these Safety Precautions carefully before using the device in order to use it correctly.
- Use the device sensibly in accordance with the prescribed steps.
- Immediately discontinue use and arrange to have the device repaired if any abnormality occurs.
- Do not use the device in a defective state, as doing so could cause physical harm to the user.
- The precautions listed in the User's Manual are very important. For your safety, please follow them carefully.
- Precautions are classified as DANGER, WARNING, or ATTENTION in order to clearly specify the level of danger and possible injury or damage that may occur if the device is misused.

● Classifications of Precautions



DANGER

Improper use of this device poses a severe and likely risk of death or serious injury.



WARNING

Improper use of this device may pose a risk of death or serious injury.



ATTENTION

Improper use of this device may result in injury or property damage*.

* 'Property damage' refers to damage affecting a dwelling, household belongings, or domestic animals and pets.

● Symbols



This symbol shows you what you must not do.



This symbol shows you what you must do.



This symbol shows you what you must be careful with.

DANGER (regarding use and storage)

- **The following individuals should not use the device.**

Use of the device could cause electronic medical devices to malfunction.

- ◆ Do not use in conjunction with any medical electronic equipment, including:
pacemakers or other implanted electronic medical devices; artificial heart-lung machines or other electronic life-support medical devices, and electrocardiographs or other worn electronic medical devices.



Prohibition

WARNING (Use and storage)

- **Do not use under the following conditions:**

Failure to comply may cause an accident or other problems.

- If you are under a doctor's care • If you are a child or adolescent • If you have an acute disease • If you have tuberculosis • If you have a fever
- If you are suffering from hypertension • If you have an infectious disease • If you have a malignant tumor • If you have a blood disease • If you have a visceral disease
- If you have a skin disease • If you have an allergic constitution • If you have atopic dermatitis • If you have skin problems • If you have sensitive skin
- If you have unhealthy skin blemishes caused by physical irritation • If you are experiencing skin irritation or redness due to sunburn • If you are severely fatigued
- If you are physically unwell • If you are under the influence of alcohol • If you are pregnant, menstruating, or lactating • If you take medication that induces drowsiness
- If you are suffering from diseases of the uterus such as endometriosis or uterine fibroids
- If you have capillary dilatation due to long-term use of steroid hormonal drugs or a liver disorder • If you have excessive myopia (-6D or higher)
- If you have had an eye or face operation • If you have diseases of the eyes or face or you are under treatment;



Prohibition

- **Do not use the device on the areas indicated below or outside of specified areas.**

Failure to comply may cause an accident or other problems.

- Cuts • Sites where plastic surgery was performed • Sites where cosmetic surgery was performed
- Anywhere inside the mouth, around the pubic region, or any mucous membrane • Acne • Sites where skin suffers from purulent inflammation
- Sites with itchiness or a hot sensation • Bulging moles • Viral warts • The Adam's apple • Above implants • Eyeballs • The eyelids or around the eyes

* If you are uncertain as to whether it is safe to use the device, consult a physician prior to use.

- **Do not use continuously on the same area. Be sure to move the device across the skin while it is in use. Do not use on areas that cannot be reached by the entire electrode head surface.**

Failure to comply may cause burn injuries.

WARNING (Use and storage)

- **Do not overuse the device.**

For usage time and frequency, follow the instructions in the User's Manual.

Failure to comply may cause physical injury.

- **Do not use the device continuously for an overly long period (for example, through commercial use).**

Failure to comply may cause an accident, a failure of the device, or an injury.

- **Do not use the device for a long time over sites where the skin is thin or sites above bones.**

Failure to comply may cause skin problems or physical ailments.

- **Do not use the device near a flammable substance (such as alcohol, thinner, benzene, nail polish remover, or spray).**

Doing so may cause the device to explode or catch fire.

- **Do not use the device in the bathroom or near a bathtub, shower, sink, or other vessels filled with water.**

Failure to comply may cause an electric shock, short circuit, fire, or failure of the device.

- **Do not splash water on the device (main body, etc.) or immerse it in water. Do not use the device in a high-humidity location or where it may be splashed with water**

Failure to comply may lead to a fire, electric shock, or malfunction.

- **Do not use the device for any purpose other than those stated in the User's Manual.**

Failure to comply may cause a failure of the device or an injury.



Prohibition



Exposure to water is prohibited



Non-intended uses are prohibited.

- **Use by unattended children or individuals with physical disabilities should be avoided. Minors should use the device only under the supervision of a guardian who has given their consent.**

Failure to comply may cause an accident or an injury.

- **Do not use the device on individuals who are unable to express their will or who have reduced skin sensitivity.**

Failure to comply may cause an accident or an injury.

- **Keep the device and AC adapter away from children and do not allow them to use either. Do not allow children to play with the device.**

Failure to comply may cause an accident or an injury.

- **Do not place the device in an unstable location. Do not drop or bump the device (either the main body or attachments).**

Failure to comply may cause a failure of the device. An injury may also be caused if the device is dropped on a foot or other exposed body part.

- **Do not place heavy items on the device, drop the device (especially during use), or otherwise subject the device to a strong impact.**

Failure to comply may cause an injury or a failure of the device.

- **Do not disassemble, attempt to repair, or modify this device in any way.**

Failure to comply may cause a fire, electric shock or other injuries. Contact your local distributor for advice on repairing the device.



User restrictions



Dropping of the device is prohibited



Disassembly is prohibited

WARNING (Use and storage)

- **If any problem occurs during use, including the presence of an abnormal odor or excess heat, stop using the device.**

Failure to comply may cause the device to become damaged or catch fire.



Use is prohibited
when an abnormal
odor or excess heat
is detected

- **Do not leave the device in hot or humid places, such as near flames, in bright sunlight, or in a bathroom. Do not bring the device close to a heater.**

Failure to comply may lead to the generation of heat, a fire, or explosion.



Combustion
warning

- **Do not place the device near fire or flames, and do not dispose of the device in a fire. Do not use, charge, or store in a high-temperature area or if the device is hot.**

The device features a built-in rechargeable battery.

Failure to comply may lead to the generation of heat, a fire, or explosion.

- **Be sure to check the plug configuration and the voltage of the power outlet before use.**

Failure to comply may cause the generation of heat, a fire, or a malfunction of the device.

- **Do not put the device into a microwave or pressure vessel.**

Failure to comply may lead to the generation of heat, a fire, or explosion.



Explosion

- **If water or foreign matter gets into the device, immediately stop using it and request an inspection.**

Failure to comply may lead to a fire or electric shock.



Mandatory
Compliance

- **If you sense an earthquake or see lightning, turn the power off or disconnect the AC adapter while the device is charging.**

Failure to comply may lead to a fire or electric shock.



Mandatory
Compliance

- **Do not use or store the device in the following locations:**

Failure to comply may lead to a fire, electric shock, malfunction, failure of the device, or other accidents.

- A high-humidity location such as a bathroom • Dusty areas
- A location where there is exposure to direct sunlight
- A location where water or other liquids may splash on the device
- A tilted location, or a location where there is vibration or shocks
- An outdoor location • A location where there are strong radio waves or magnetism
- Locations that are accessible to children • A location where there is exposure to oil smoke or steam • A location that may become hot, such as near a heating device (for example, a heater) • A location with drastic temperature changes (for example, near an air conditioner or heater)

- **If the device is dropped or damaged, turn off the power immediately and request a repair/inspection.**

Failure to comply may lead to a fire or electric shock.

- **Do not leave the device unattended while it is turned on.**

Doing so may cause the device to catch fire or may lead to an accident.

ATTENTION (Use and storage)

- **Before use, check to make sure the electrode head is not cracked, deformed, or broken. Do not use the device if it is damaged or malfunctioning.**

Failure to comply may cause your skin to suffer an injury or other problems, or lead to the worsening of existing conditions.

- **Do not use continuously for more than six minutes.**

Failure to comply may cause skin problems.

- **Do not press the device strongly or use it intensively on a single spot.**

Pressing the device stronger than necessary or using it intensively on a single spot may damage the skin.

- **Do not allow the device to come into contact with another beauty device or electronic appliance while the power is on. Do not use with other electronic products (electric blankets/bed sheets, heated tables, etc.) at the same time.**

Failure to comply may lead to an accident due to malfunction.

- **Do not leave skin-care products applied to the electrode head while the power is turned on.**

Failure to comply may cause heating up of the device and skin-care products.

- **Do not wipe the device with solvents such as alcohol, thinner, benzene, nail polish remover, kerosene, chemicals, or polishing powder.**

Failure to comply may cause damage to the surface of the device.

- **Avoid allowing the electrode head to come into contact with any other metal surfaces.**

Failure to comply may cause a failure of the device or an injury.



Prohibition

- **Do not use the device on pets.**

Failure to comply may cause injuries.

- **Do not use the device above clothes.**



Prohibition

- **Do not use the device outdoors.**

Failure to comply may cause a failure of the device.



Outdoor use is prohibited

- **Be sure to remove makeup before using the device on your face.**

If you use the device over makeup, the foundation may cause dark staining of the skin.



Mandatory Compliance

- **Be sure to comply with the following items.**

Failure to comply may cause an accident, injury, or a failure of the device.

- Use the device appropriately based on your skin condition.
- Do not use the device after sunbathing, or in combination with peeling, skin packs, or other treatments.
- Be sure to turn the device off after use.

- **During treatment, carefully check that your skin is not showing any abnormalities.**

Discontinue use immediately if you start to feel pain or fatigue or if you see any skin reaction during use.

Stop using the device immediately if the treatment does not agree with your skin. If symptoms persist the following day and beyond, consult a physician.



ATTENTION (Use and storage)

- **Use only Level 1 upon first use and until you are accustomed to use.**

Failure to comply may cause an accident or injury.

- **When you have not used the device for a long period of time, check to see that it is functioning normally before re-starting use.**

Failure to comply may lead to an accident or malfunctions.

- **Remove all metal accessories (watches, necklaces, rings, earrings, etc.) when using the device.**

Failure to comply may cause an accident or an injury. Accessories may also become entangled in the device.

- **Reapply skin-care products or water during treatment to ensure that there is always some liquid between the electrode head and the skin.**

If there is an insufficient amount of skin-care products or water, the stimulation will weaken, causing skin problems.

- **If you feel an unpleasant tingling on your skin, reduce the intensity level or move to another area. Alternatively, moisturize your skin with the included skin-care products before use.**

Failure to comply may cause skin damage.



Mandatory
Compliance

- **When using on the same area again, be sure to leave an interval of 24 or more hours between treatments.**

Excessive use may damage the skin. The above recommendations are guidelines only; please observe your skin condition and use the device accordingly.

- **After each use, remove the dirt, cosmetics, and other particles that have adhered to the device according to 'After Treatment.'**

Failure to comply may cause a failure of the device or skin problems.

- **When cleaning the device, be sure to turn off the power, disconnect the AC adapter from the outlet, and follow the instructions in the User's Manual.**

Failure to comply may lead to an accident or malfunctions.

- **If you are currently undergoing dental treatment or have teeth fillings, choose a lower intensity level and apply the device on a different area, or turn off the EMS function.**

You may feel strong irritation or discomfort by EMS on your cheeks or chin. If you feel strong discomfort, consult a physician.



Mandatory
Compliance

WARNING (The power supply)

- **Use the AC adapter and USB cable included with this product. Plug the AC adapter directly into a wall power outlet and do not overload the electric circuit.**

Failure to comply may cause an electric shock, short circuit, fire, or failure of the device.



Overloading of
an electric circuit
is prohibited.

- **Do not damage, modify, bundle, or otherwise apply undue force to the AC adapter or USB cable.**

Failure to comply may cause the cable to break, resulting in a fire or electric shock.



Careless or
reckless use
is prohibited

- **Do not wrap the USB cable around the device or AC adapter when storing the device.**

Placing a load on the USB cable may cause a disconnection, resulting in electric shock, or a short circuit.



Use of a damaged
cable or plug
is prohibited

- **Do not use if the AC adapter or USB cable is damaged, or if the wall socket is loose.**

Failure to comply may cause an electric shock, short circuit, fire, or failure of the device.

Contact your local distributor for advice on repairing the device.

- **Do not wet, wash, or immerse the AC adapter or USB charging cable in water.**

Failure to comply may cause an electric shock, short circuit, fire, or failure of the device.



Exposure to water
is prohibited

- **When disconnecting the AC adapter from the device's main body or the power outlet, be sure to hold the adapter at the front as you pull (do not touch the metal part).**

Failure to comply may cause an electric shock, short circuit, fire, or failure of the device.



Removing
the plug

- **Unplug the AC adapter and USB cable when not in use. Do not insert or disconnect the plug with wet hands.**

Failure to comply may cause an electric shock, short circuit, or fire.



Disconnecting
the AC adapter

- **In the unlikely event that an abnormality occurs, immediately unplug the AC adapter and USB cable.**

Do not use the device if smoke, abnormal noises, or an odor is detected, or if it is otherwise operating in an abnormal state.

WARNING (The power supply)

- **Before charging the device, check to ensure the charging terminal and USB cable are not wet.**

Failure to comply may cause an electric shock, short circuit, or fire.

- **Do not pull the AC adapter or USB cable when moving or lifting the device.**

Failure to comply may cause an electric shock, short circuit, fire, or failure of the device.

- **Be sure to use in an operating voltage range from 100 to 240 volts.**

Be sure the AC adapter and USB cable are fully inserted into an electrical outlet.

Failure to comply may cause a fire, electric shock or other accident.



When Using Outside of Japan

WARNING

- **Be sure to use in an operating voltage range from 100 to 240 volts.**

Failure to comply may cause a fire, electric shock, or a failure of the device.



- **Be sure to check the plug configuration and the voltage of the power outlet before use.**

Failure to comply may cause the generation of heat, a fire, or a malfunction of the device.

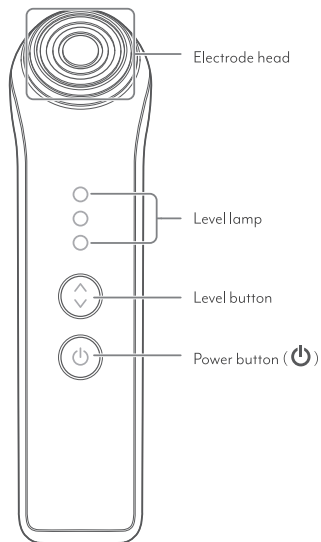


- Use a power plug adapter (not included) for outlets with shapes that differ from those in which the included power adapter plug can fit.
- The plug configuration and voltage may vary depending on the region and the type of accommodation. Always be sure to check for compatibility before using the device.
- For information about plug adapters, consult a travel agency or a consumer electronics retailer.

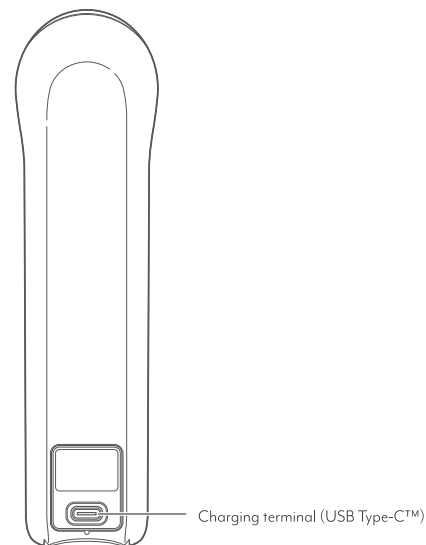
Names and Functions of Components

Main Body

● Front view



● Rear



Accessories

● AC adapter

● USB cable (USB Type-C™)

● Flawless Serum Moisture 80G

● User's Manual

The design and specifications of the device and attached accessories are subject to change for improvement purposes without notice.

· USB Type-C™ and USB-C™ are trademarks of the USB Implementers Forum.

Functions

Safety functions

- Temperature sensor
Output will be reduced automatically for safety reasons when the temperature on the skin or the electrode head rises.
If the temperature becomes too high, the power will be turned off for safety. (When this happens, the electrode head flashes and beeps five times)
If this happens, let the device rest for about 30 minutes.
- Current sensor
Measures the output current value and controls the output.

Auto Power Off

The device will automatically switch off approximately six minutes after the treatment started (two short beeps).

Timer / Standby

The treatment duration on the entire face is about six minutes. After three minutes, a beeping sound will notify you that the RF and EMS outputs are paused (Standby function).

The Power button (⏻) and Level lamp will flash. When you are ready to perform treatment, press the Power button (⏻) to restart.

If the device is not operated within approximately five minutes of going into Standby Mode, it will emit a beeping sound and switch off automatically (Auto Power Off).

When you are ready to perform treatment, press the Power button (⏻) to restart.

Charging Guide Display

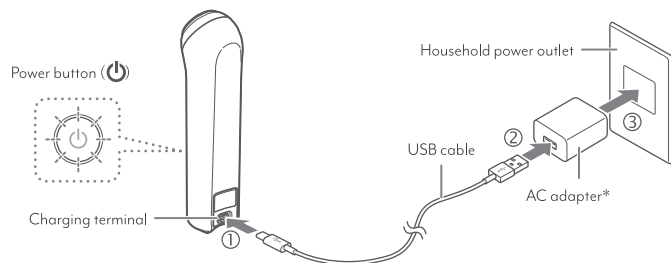
When you turn the power on, the color of the lamp on the Power Button (⏻) (either white or red) will indicate the remaining battery level. If the lamp lights red, recharge the battery before using the device again.

The remaining battery level display will differ according to the condition of the battery and the usage environment.

Before Use

Charge the device

Using a household power outlet



You can check the remaining battery level through the Power button (1).

Remaining battery level indicator	
White	The battery is sufficiently charged.
Red lighting	Low battery.
Red flashing	Charge the battery.

- While the battery is charging, the Power button (1) will blink on and off.
- When the battery has fully charged, the Power button (1) will be on for approximately five seconds and then will switch off. Remove the AC adapter and USB cable.
- At an indoor temperature of approximately 25°C, it will take about three hours to reach a full charge, at which point the device can operate for about 40 minutes.

Actual charging time and operating time will differ depending upon the remaining battery level and the charging environment.

*If charging does not begin after approximately 10 seconds, check whether the USB cable connection is loose.



- If there is any moisture on or around the main body or charging terminal, be sure to wipe it dry. Charging the device while it is moist could cause damage to the battery.
- Fully charge the battery before using the device for the first time after purchasing.
- When using the device for the first time or when the device has not been used for an extended period of time, it is possible that you will be unable to use the device for very long even with a full charge displayed. In such a case, recharge the device before using it.
- Use only the included USB cable and AC adapter.
- If the device is charged using an adapter with a rated power supply of DC5V2.0A or less, an error may occur (beeping sound: notification of error with seven beeps).

*In some cases, the device might not charge properly if using a generic cable or AC adapter.

Pre-testing on Skin

When using the device for the first time, always test for compatibility.



ATTENTION

- Be sure to perform a pre-test in order to prevent skin problems from occurring.
- If a rash, reddening, itchiness, stinging sensation, or other abnormality occurs at the pre-testing site, immediately stop the pre-test.
- Check carefully to make sure there are no skin abnormalities before using the device. Stop using the device immediately if the treatment does not agree with your skin.

1

Wash the inner side of your arm with soap and water, then wipe dry with a towel.

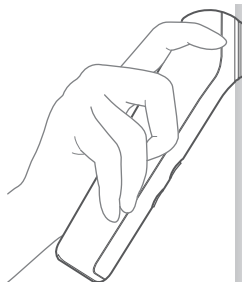


2

Apply the included skin-care product (about one pearl-sized drop) to the center of the electrode head, turn the power on, and then use the device for about three minutes while moving it across the skin (page 13).

Be sure to test at Level I.

How to hold the device and use it on your skin.



Hold the main body as shown below, moving it slowly so that the entire electrode head remains in contact with your skin.

- Be sure to move the device with the entire electrode head in contact with your skin.

3

Rub the skin-care products remaining on your skin into the skin and check for any abnormalities.

Continue to use the product only if you experience no reddening or burning sensation on your skin within 24 hours.

How to Use

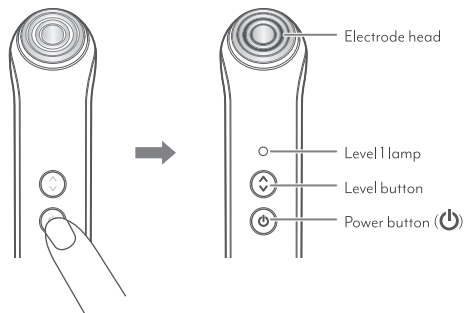
Basic method of use

Be sure to remove makeup and wash your face before using the device.

1

Turn on the device

The Power button (⏻), Level button, Level 1 lamp, and electrode head will be lit, and the Triple Boost RF (RF), Dynamic Multiple Currents (EMS), and red LED will be output.



Press and hold for about one second.

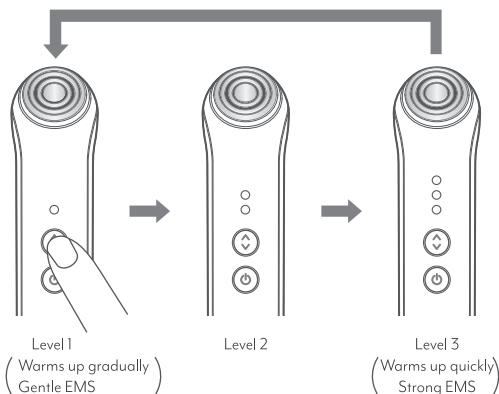
Personal memory function

The device remembers the level being used and whether EMS was turned on/off when last treatment ended, and returns to the same settings the next time it is switched on.

2

Select the level

Each time the Level button is pressed, levels can be adjusted. You can check the treatment level from the level lamp.



Dynamic Multiple Currents (EMS) on/off switch

Press the Level button and hold down to switch EMS on/off (Level button lit: EMS on; unlit: EMS off).

ATTENTION

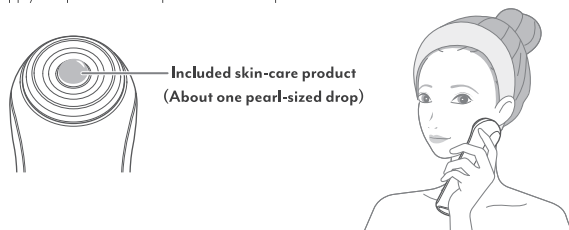
Use only Level 1 upon first use and until you are accustomed to use.

3

Apply the included skin-care product to the center of the electrode head and then apply the electrode head to the skin and move it around.

Divide the facial treatment in six areas (pages 15-16).

Apply one pearl-sized drop of the skin-care product for each area.



See 'How to move the device' (pages 15-16) for information on how to move the device correctly.

ATTENTION

- Do not apply the included skin-care product with your hand. Doing so may lead the skin-care product stick on the device or cause it to slip and fall.
- If the device does not move smoothly, apply more of the included skin-care product.
- Use in a position in which the entire surface of the electrode head comes in contact with your skin.
- If it feels too hot, move it a little more quickly or lower the level.

4

Care for the skin after the treatment

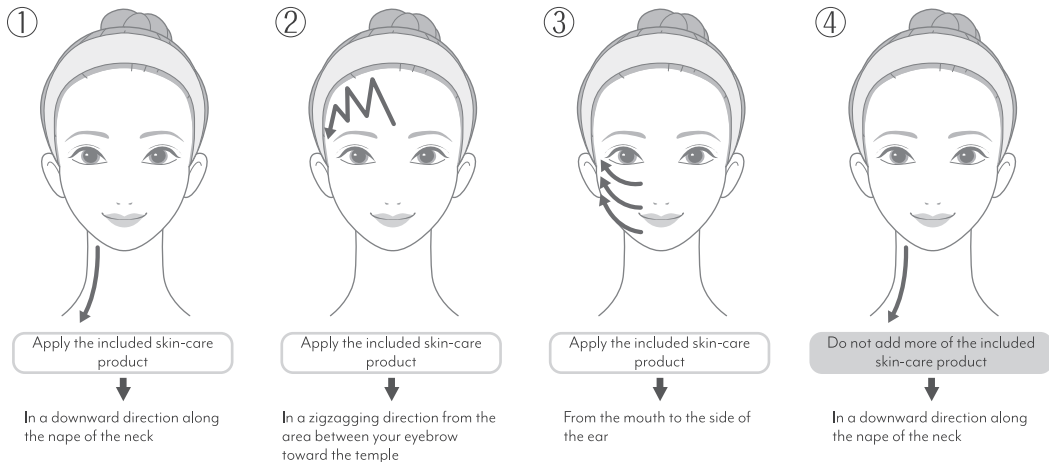
After treatment is complete, rub the remaining skin-care product into the skin and then use your usual basic skin-care products to condition the skin.

- Do not use the device on the Adam's apple, the eyelids, or around the eyes.
- Do not leave skin-care products applied to the electrode head while the power is turned on.



How to move the device

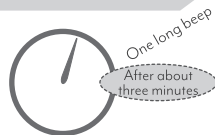
Move the device in the directions of the arrows in order from ① to ⑧ below. Repeat the movement three times for each arrow.

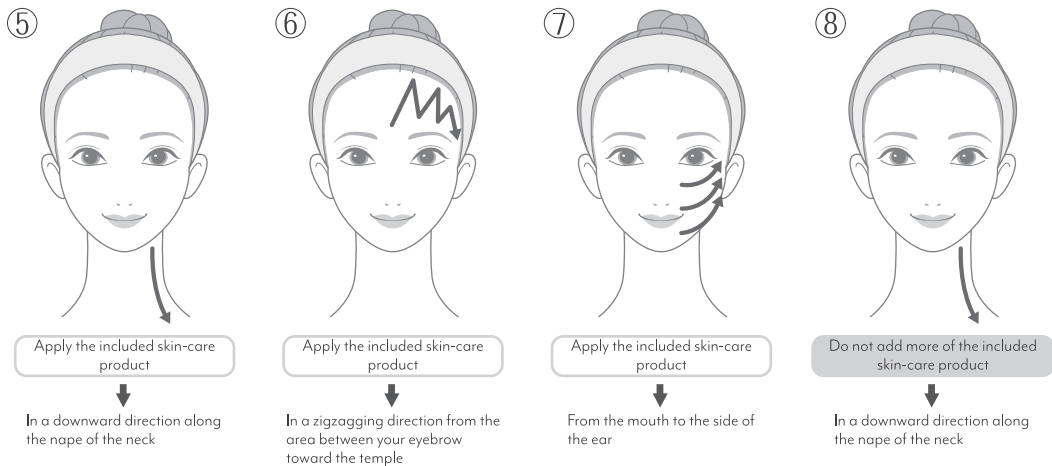


Left side

Approximately
three minutes

- Recommended speed for moving the device: 4 cm/second
- Recommended duration of use: about six minutes/use (over the entire face)
- The device will make one long beep after three minutes and the output will pause. Please use this as a guide.
To restart, press the Power button (⏻).
- If you want to stop the treatment during use, press the Power button (⏻) for at least one second to turn off the power.





Right side

Approximately
three minutes

Automatic
Power-off

! ATTENTION

- Do not use continuously for more than six minutes.

Failure to comply may cause skin problems.



Beeping sound
Approximately
six minutes

The device will automatically switch off approximately six minutes after the treatment started.

Points For Your Treatment

Use as described below for more effective results in the areas of concern.

Around the mouth

Move the device three times in the directions of the arrows below.



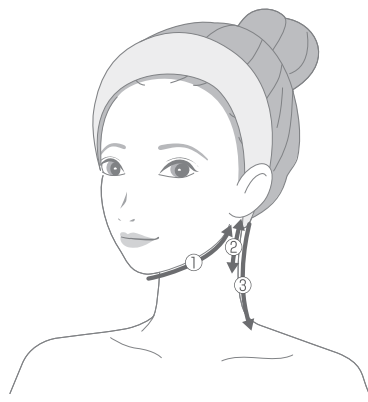
Apply the included skin-care product



In an upward direction along the smile lines, toward the temple
(three times)

Chin and face line

Move in the directions of the arrows three times each in order from ① to ③
as shown below.



Apply the included skin-care product



- ① From the tip of the chin to below the ears (three times)
- ② Back and forth below the ears (three times)
- ③ From top to bottom along the nape of the neck (three times)

After Treatment

How To Clean

Clean the device after each use for hygienic reasons.



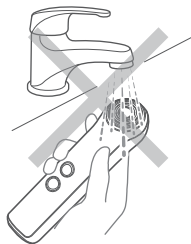
WARNING

- **When cleaning the device, be sure to turn it off and disconnect the USB cable from the main body.**

Failure to comply may cause an electric shock, short circuit, or fire.

- **Do not wash the device in water.**

This device is not waterproof. Doing so may cause a failure of the device.



1

Wipe off any dirt using a well-wrung soft cloth or similar material.

- For stubborn stains, wipe gently with a cloth soaked in a diluted neutral detergent.
- Remove any skin-care products remaining between the electrode ring of the electrode head with a cotton bud or cotton pad.

ATTENTION

- **Do not leave the device with the included skin-care product on it.**
- **Do not wipe the device with solvents such as alcohol, thinner, benzene, nail polish remover, kerosene, chemicals, or polishing powder.**



Storage

- Store in a clean, well-ventilated place out of the reach of children.
- Remove the AC adapter and USB cable from the main body and the power outlet when not in use for a long period of time.
- Do not leave the device in hot or humid places, such as near flames, in bright sunlight, or in a bathroom.

Maintenance and Inspections

- If you have not used the device for an extended period, inspect it carefully and check that it works properly and safely before using it again.
- If the device is malfunctioning, go to 'Troubleshooting' (page 20) and attempt to identify the problem before requesting a repair.
If the problem persists, contact your local distributor, making sure that you have your purchase details at the ready when you call.
- If the device malfunctions, appears damaged, or needs service, please contact your local distributor.

Additional Information

Troubleshooting

If you perceive any abnormality while using the device, verify the following points before arranging to have it repaired.

Problem	Possible Causes and Solutions
The device does not turn on.	→ Press and hold the Power button (⏻) for about one second.
	→ The device has run out of power. Charge the battery (page 11).
The device shuts off.	→ The device is in standby or Auto-off status (page 10). Press the Power button (⏻) to turn the power on (Standby function). If the device is not operated within five minutes of going into Standby Function, it will switch off automatically (Auto Power Off).
The device only operates for a few minutes even after charging.	→ The device will automatically switch off approximately six minutes after the treatment started.
	→ The battery level is low. Charge the battery (page 11).
	→ The battery has expired. Contact your local distributor.
The device does not start charging.	→ Insert the included USB cable into the main body (page 11). Check to make sure the cable is not loose.
	→ Connect the included AC adapter to a wall outlet (page 11).
	→ If the device is charged using an adapter with a rated power supply of DC5V2.0A or less, an error may occur. (Beeping sound: notification of error with seven beeps (page 11))
The radio frequency (RF) feels too hot	→ The device has been pressed against the same area of skin for too long. Be sure to keep the roller moving over the skin during operation.
	→ Move the device a little more quickly.
	→ Lower the level. Be sure to use Level 1 on the first use.

Problem	Possible Causes and Solutions
The radio frequency (RF) does not feel warm.	→ Your skin is dry. Moisturize your skin by applying the included skin-care product.
	→ Raise the level.
	→ The RF and EMS functions will pause approximately three minutes after the treatment started. (Timer/Standby function). Press the Power button (🔌) to restart.
EMS causes uncomfortable tingling or pain.	→ Lower the level. Be sure to use Level 1 on the first use.
	→ Use in a position in which the entire surface of the electrode head comes in contact with your skin.
The EMS feels weak or I cannot feel it at all.	→ Raise the level.
	→ Your skin is dry. Moisturize your skin by applying the included skin-care product.
	→ Depending on muscle mass, there may be some skin areas where it is difficult to feel the EMS.
	→ EMS output is turned off. Press and hold the Power/Level button (page 13).
	→ The RF and EMS functions will pause approximately three minutes after the treatment started. (Timer/Standby function). Press the Power button (🔌) to restart.
The Power button light turns red.	→ It is displaying the remaining battery level (page 10).
The level does not begin at Level 1.	→ This is the Personal Memory Function (page 13) operating.

Frequently Asked Questions

Q What is the recommended duration and frequency of use?

A

Try to use five days a week (once daily, up to six minutes).

* Please observe your skin condition and use the device accordingly.

* Check carefully to make sure there are no skin abnormalities before using the device. Stop using the device immediately if the treatment does not agree with your skin.

Q Can I use the device continuously?

A

We recommend using this device once a day, for six minutes.

Q How much of the skin-care product should I use each time?

A

Apply about six pearl-sized drops of the included skin-care product for the entire face.

It is possible to use skin-care products that you already own if they are water-soluble. If you are using skin-care products that you already own, use the recommended usage amounts as a guide. We recommend using gel skin-care products. If you feel that the amount of skin-care product is insufficient, add more.

Q Can I use the device in the bathroom?

A

This device is not waterproof. Do not use the device in the bathroom.

Q My skin feels hot after use.

A

This is due to the heat of the radio frequency (RF).

Q The electrode head does not warm up.

A

The radio frequency (RF) does not warm the electrode head. Rather, it uses the power of electricity to warm your skin.

Q Do different levels produce different effects?

A

As the levels increase, your skin is warmed more quickly and strongly. You will also feel the EMS more strongly.

* Use only Level 1 when starting until you are accustomed to use.

Product specifications

Rated power supply	DC5V 2.0A
Power consumption	Approximately 9W (when charging)
Battery	Lithium ion battery
Charging time	Approximately 3 hours (May vary depending on the charging environment.)
Operating time	Approximately 40 minutes (from a fully charged state) (May vary with conditions of use and the EMS level.)
Outside dimensions	Approximately W 46 x D 47 x H 173 mm
Weight	Approximately 175 g
Materials	Main body: ABS resin and polycarbonate Electrode head: Stainless steel
Country of origin	Japan
Accessories	AC adapter One USB cable (USB Type-C™) One Flawless Serum Moisture 80G User's Manual
Recommended environmental temperature	10 to 40°C

After-sales Service

About the skin-care product included with the device

- Please contact your local distributor for detailed information on products and purchases.

* Sales may be discontinued without prior notice.

Contacts for overseas customers

For countries and regions outside Japan, please contact to the store where you have purchased your product for any inquiry about the product.

Alternatively, check YA-MAN Global Official Website (<https://www.ya-man.com/en/>)

User Manual (WEB)

User Manual is available at <https://www.ya-man.com/en/usermanual/>

About disposal

Correct Disposal of this product

- This marking indicates that this product should not be disposed with other household wastes throughout the UK and EU. To prevent possible harm to the environment or human health from uncontrolled waste disposal, recycle it responsibly to promote the sustainable reuse of material resources. To return your used device, please use the return and collection systems or contact the retailer where the product was purchased. They can take this product for environmental safe recycling.



Rechargeable battery

- The rechargeable battery is a consumable item. (not covered by the product warranty)
- If the device no longer operates for more than a short period of time even after the battery has been recharged, the battery may have reached the end of its service life (the battery is expected to last 300 charge cycles).
- If you need a battery replacement, contact your local distributor.
- This appliance contains batteries that are only replaceable by skilled persons.

Disposing of the device

- Follow your local government rules for proper disposal of this product.
- This product uses a lithium ion battery.



How to remove the battery for disposal

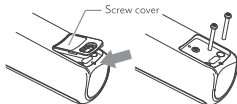
The lithium-ion battery used in this product is a valuable recyclable resource.

- The battery must be removed from the appliance before it is disposed of.
- Be sure to turn off the power and disconnect the adapter before removing the batteries.
- Use a screwdriver to remove the battery. Be careful not to injure yourself.
- When removing the battery, be careful not to damage it on a hard object, etc. * Failure to comply may cause the generation of heat or a fire.
- Bring the removed battery to the appropriate collection point for disposal.
- Follow your local government rules for a proper disposal or recycle of this product.

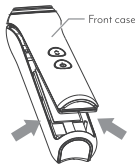
Operation Steps

Refer to figures ① to ⑤ below to remove the battery.

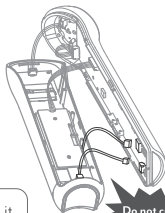
- ① Remove the screw cover with a thin sharp object, then unscrew two screws.



- ② Remove the front case from the bottom side.

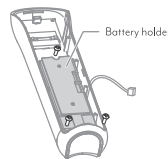


- ③ Remove the cable.

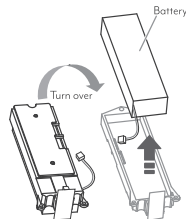


Do not cut the cable

- ④ Remove the three screws on the battery holder.



- ⑤ Remove the battery holder and remove the battery.



This figure is intended to be used for disposing of the product, not repairing it.
CAUTION: Disassembling the device by yourself may cause a failure.

