

User's Manual

Household beauty device Medi Lift EP-14

• Please read Safety Precautions on the back the of this page to use the device safely.

©2018 YAMAN LTD. ALL RIGHTS RESERVED. Unauthorized copying and replication of the contents, text and images of this User's Manual are strictly prohibited. EP14-001E

Introduction

Thank you for purchasing YA-MAN product.

- Carefully read this User's Manual to use the device properly and safely.
- After reading the contents hereof, make sure to store this User's Manual in an accessible location.
- Make sure to include this User's Manual if you are transferring ownership of the device to another person.

Accessories

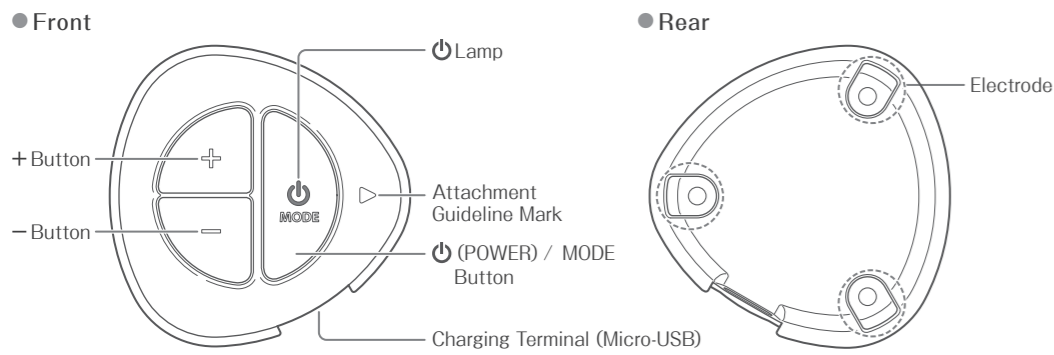
- Charging USB Cable (Micro-USB)*
- User's Manual

*Do not use this cable for products other than Medi Lift.

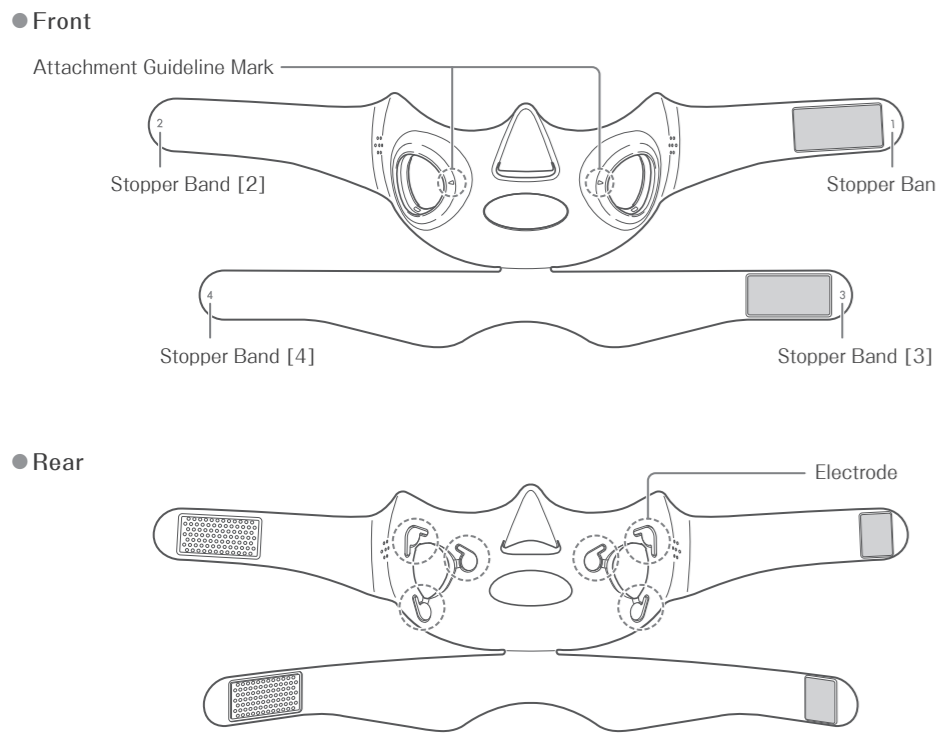
Design and specifications of the main unit and accessories are subject to change for improvement purposes without any notice.

Names and Functions of Components

Controller



Silicone Mask



Functions

Auto Power Off

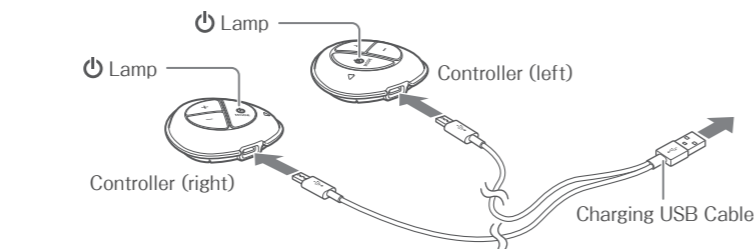
The device will automatically turn off approx. 10 minutes after it has been turned on and the mode was set. If you shift from one mode to another while using the device, the power will turn off approx. 10 minutes after you have changed to the new mode. Be careful of the operating time.

Before Use

Charging the battery

How to detach a controller from the silicone mask

- Stretch out the silicone mask and push out the controller.
- Do not excessively stretch the mask. It may cause a damage to the silicone mask.



- Charging will begin once you connect controllers to an electronic power supply as shown on a diagram. ⏻ lamps will flash purple during a charge.
- When charging is complete, the ⏻ lamp will turn off. Unplug a charging USB cable.
- At an indoor temperature of approximately 25°C, it will take about 1.5 hours to reach a full charge, at which the device can operate for about 5 hours. Actual charging time and operating time will differ depending upon the remaining power and the charging environment.

Attention

- If there is any water droplet on the controllers and charging terminal, make sure to wipe dry. Charging while water droplets are remaining on the device could cause a failure.
- When charging the battery for the first time after purchasing the product, use the device only after the battery is fully charged.
- When using the product for the first time or when the item has not been used for an extended period of time, the device may only operate for a short period of time even after the ⏻ lamps stopped flashing. In such a case, charge the controllers again before using it.
- Use only the enclosed charging USB cable.
- *The controllers may not be charged properly with other items on the market.

Pre-testing on skin

When using the device for the first time, always test first for compatibility with your skin.

Caution

- Make sure to perform a pre-test in order to prevent skin problems from occurring.
- If a rash, reddening, itch, stinging sensation, or other abnormality occurs at the pre-testing site, immediately stop the pre-test.
- Do not use the device if a skin abnormality is perceived.

1 Wash your upper inner arm with a soap and wipe dry with a towel

2 Apply oil-free gel on washed skin and hold the controller on your upper arm. Make sure three electrodes are in contact with your skin. Select Auto-mode and Level 1 (the minimum) with another hand and use it for approx. 3 minutes

- Test the silicone mask in a status with the controllers attached. Closely attach the three electrodes on the back of either right or left side of the silicone mask to your skin.
- The controllers are set to Auto-mode and the EMS level (intensity) is set to Level 1 (the minimum) by default when turned on.
- For how to use, refer to the section 'How to apply treatment'.

3 Wipe off gel and check that your skin shows no abnormality

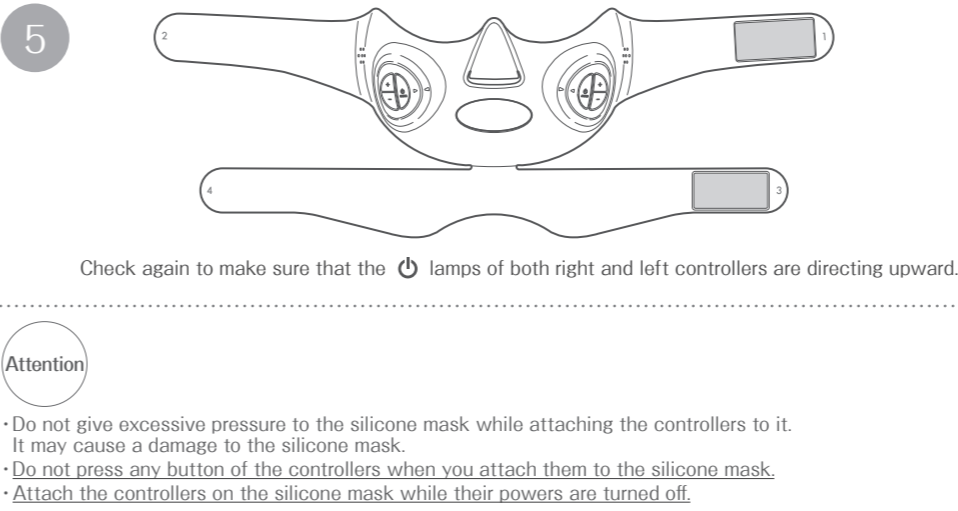
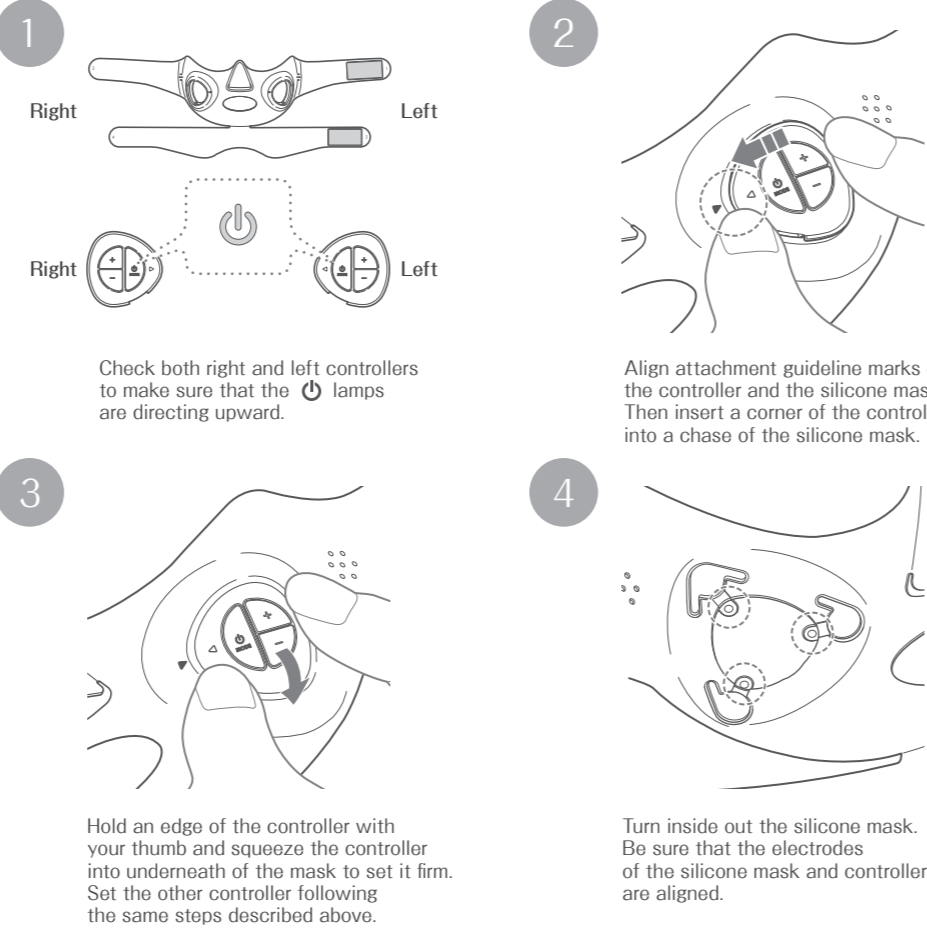
Continue to use the product only if your skin experience no abnormality such as reddening or burning sensation on your skin within 24 hours.

How to Use

Wearing a silicone mask

Attach two controllers on the silicone mask

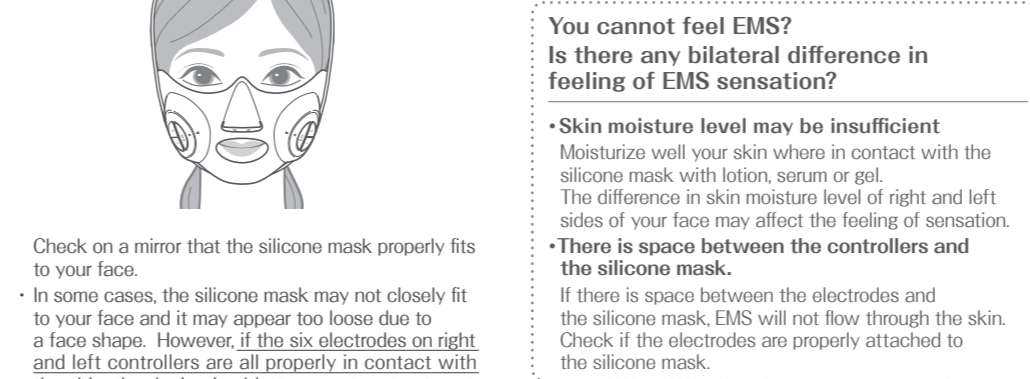
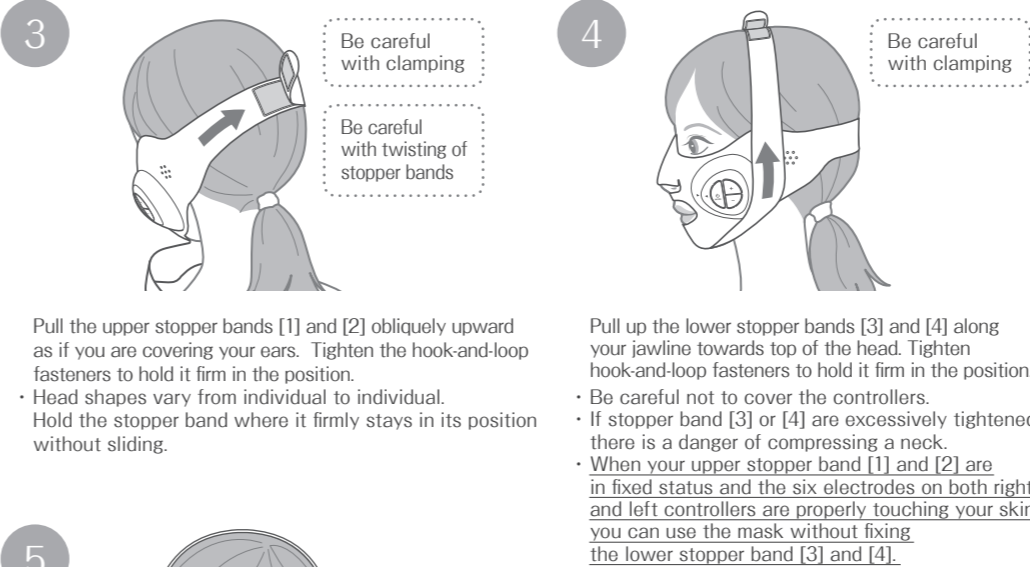
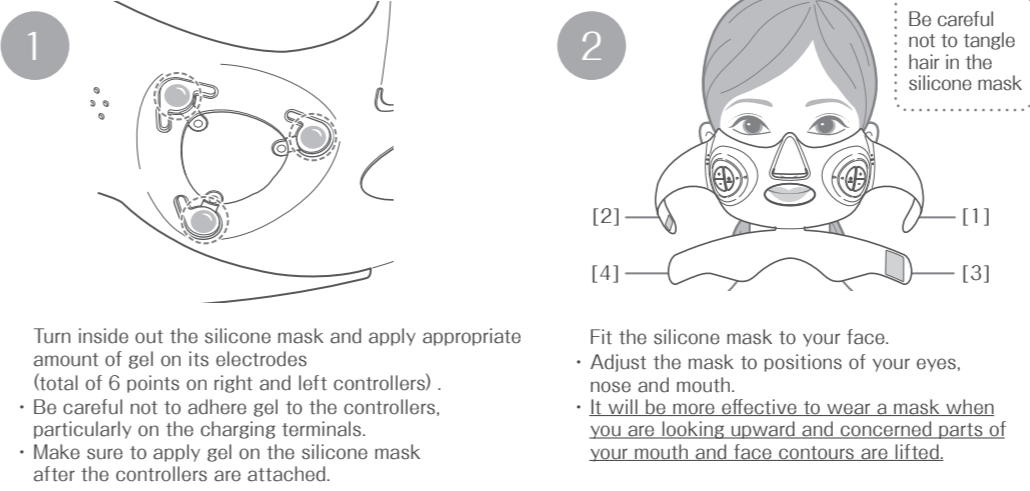
Make sure the controllers are facing the right direction.



Wearing a silicone mask

After removing make-up and washing your face, apply your lotion, serum or gel to moisturize your skin thoroughly before use. You can wear the silicone mask above a sheet mask. EMS current will not be carried if there is not enough moisture between the electrodes set on the silicone mask and the skin. Make sure there is always enough moisture.

- *Do not use cosmetics which contain oil such as an oil-based serum. It may cause a deterioration of the silicone mask.
- *Be aware that when highly viscous gel and cosmetics get through a charging terminal of the controllers, it may cause a failure of the device.



Attention

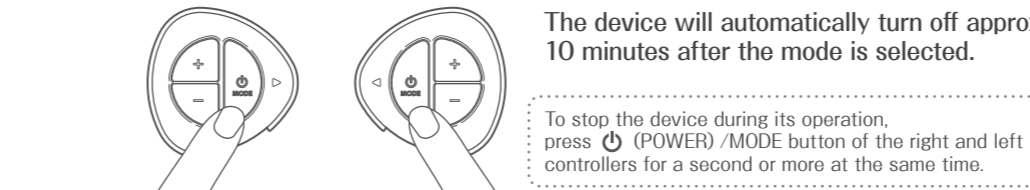
- Be sure to attach the controllers to the silicone mask before wearing it.
- Wear the silicone mask when its power is turned off.
- Wear the silicone mask with your hair being tied up.
- Be careful not to get your hair caught by hook and loop fasteners of the silicone mask when you wear it.
- Be sure the electrodes (a total of six on the right and left controllers) on the back of the silicone mask are in contact with skin. If the contact between the electrodes and the skin is too loose, you may not be able to gain the effect of EMS.
- When you use highly viscous gel or other cosmetics, be very careful not to let them get through into the charging terminals while you are attaching or removing the controllers.
- Be sure to use the product after your hair becomes dry, when you put oil-based leave-in treatments on your hair.
- Be sure there is always enough moisture such as lotion, serum or gel between your skin and the electrodes. If there is not enough moisture, EMS transmission becomes inefficient and may cause decreased effects or skin troubles.

How to apply treatment

Use a mirror when you are using the device until you get used to it.

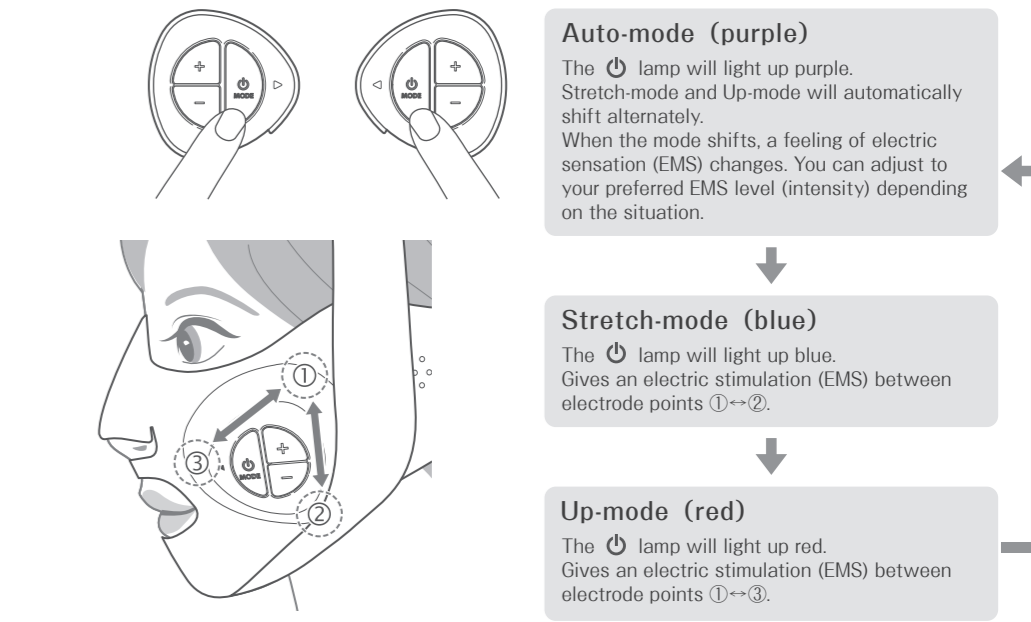
1 Turn on the power

- Press ⏻ (POWER) /MODE button of the right and left controllers for a second or more at the same time. A beep will sound and the ⏻ lamp will light up purple.
- Be sure that you are wearing the silicone mask with the controllers attached when you are turning on the device.
- The mode is set to Auto-mode and the EMS (intensity) level is set to Level 1 (the minimum) by default when turned on.



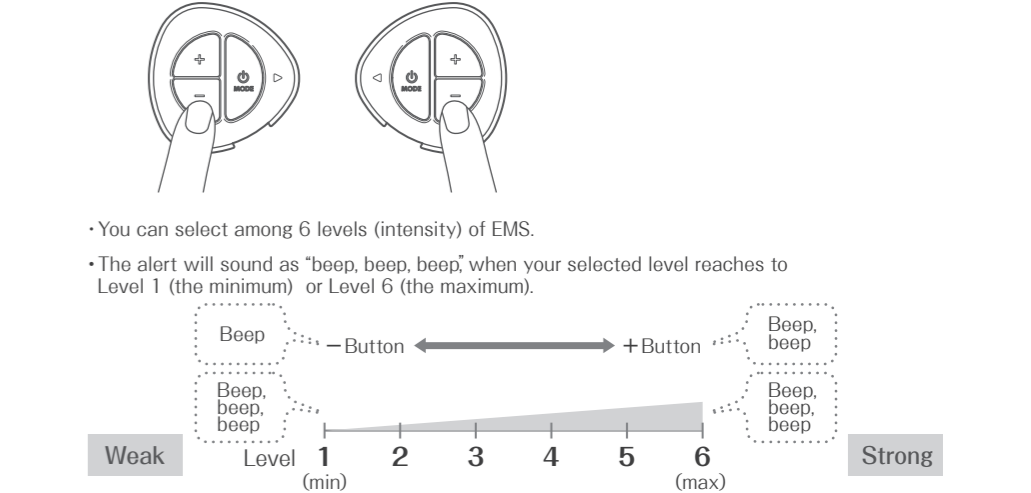
2 Select your choice of mode

Press ⏻ (POWER) /MODE button of the right and left controllers at the same time. Each time you press the button, the mode will shift with a beep.



3 Select your choice of EMS level (intensity)

Press +/- buttons of right and left controllers at the same time.

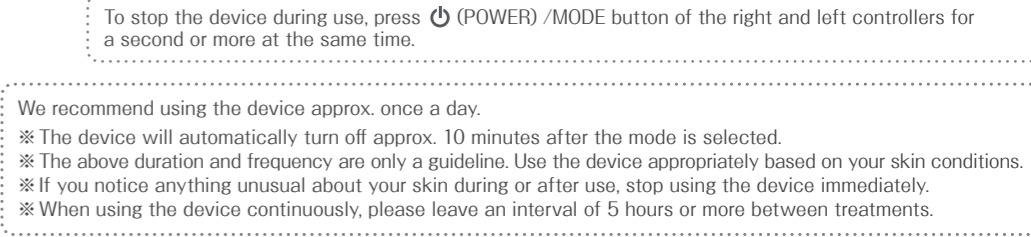


Attention

- Always select Level 1 (the minimum) if it is your first treatment or until you become accustomed to the operation and treatment.
- If your skin becomes dry, you can add more lotion, serum or gel. Turn off the power and take off the silicone mask before applying extra moisturizer.
- Do not raise EMS level (intensity) to the point where you feel tingling pain.

4 Turning off the device

The device will automatically turn off approx. 10 minutes after the mode is selected.



After Treatment

How to clean (the controllers)

Clean the device after each use for a hygienic reason. Remove the controllers from the silicone mask.

Warning

- When cleaning the device, be sure to turn off the device.
- Do not wash with water. This device is not water-proof. May cause a failure of the device.

1 Wipe off any dirt using a well wrung soft cloth or similar material

For stubborn dirt, wipe gently with a cloth soaked in a diluted neutral detergent.

Caution

- Do not store or leave the device with lotion, serum or gel adhering to the device.
- Never use alkaline detergent, alcohol, thinner, or nail polish remover.

How to clean (the silicone mask)

Clean the silicone mask after each use for a hygienic reason. Remove the controllers from the silicone mask.



Caution

- Do not store or leave the silicone mask with lotion, serum or gel adhering to the mask.
- Do not use hot water.
- Never use alkaline detergent, alcohol, thinner, or nail polish remover.

