

# m y s é

English User's Manual come with this product.

Please download the other language's User's Manual version from this link (<https://www.ya-man.co.jp/en/support/documents/>) or scan with QR code with your camera phone.

Please carefully read User's Manual to ensure safe and proper use of the device.



TO ACCESS SCAN WITH  
YOUR CAMERA PHONE

## User's Manual

Home-care Beauty Device

Scalp Lift Active Plus

MS-82G

### Introduction

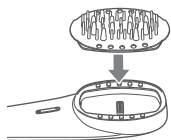
Thank you for purchasing a YA-MAN product.

- Do not use the device before reading the Safety Precautions (pages 3-11).
- Please read this User's Manual carefully for information on how to use the device properly and safely.
- After reading the contents hereof, be sure to keep this User's Manual in an accessible location.
- Make sure to include this User's Manual if you are transferring ownership of the device to another person.
- This appliance contains batteries that are non-replaceable.

## Steps for Use

1

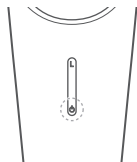
**Set the attachment**



2

**Turn on the device**

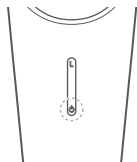
Press and hold the Power/Vibration button for about one second.



3

**Set vibration on or off**

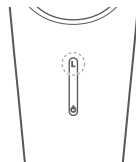
Press the Power/Vibration button to toggle the vibration setting.



4

**Select EMS intensity level**

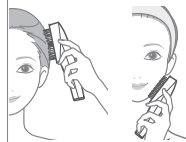
Press the LEVEL button to choose your preferred intensity.



5

**Apply to scalp or skin**

Use the device on a wet scalp or skin.



6

**Turn off the device**

The device will automatically turn off approximately 10 minutes after it has been turned on.

# Table of Contents

---

Safety Precautions ————— p.3

Names and Functions of Components — p.12

Before Use ————— p.15

How to Use ————— p.20

After Treatment ————— p.28

Additional Information ————— p.31

● Checklist for Possible Problems ————— p.31

● Frequently Asked Questions ————— p.33

● Product Specifications ————— p.35

After-sales Service ————— p.36

## Safety Precautions

- Read these Safety Precautions carefully before using the device in order to use it correctly.
- Use the device sensibly in accordance with the prescribed steps.
- Immediately discontinue use and arrange to have the device repaired if any abnormality occurs.
- Do not use the device in a defective state, as doing so could cause a physical harm to the user.
- The precautions listed in the User's Manual are very important. For your safety, please follow them carefully.
- Precautions are classified as DANGER, WARNING, or CAUTION in order to clearly specify the level of danger and possible injury or damage that may occur if the device is misused.
- This appliance shall not be used by, or on, persons wearing implants not compatible with its use.
- This appliance shall not be used by, or on persons up to and including years of age.

### Classifications of Precautions



#### DANGER

Improper use of this device poses a severe and likely risk of death or serious injury.



#### WARNING

Improper use of this device may pose a risk of death or serious injury.



#### CAUTION

Improper use of this device may result in an injury or property damage\*.

### Symbols



This symbol shows you what you must not do.



This symbol shows you what you must do.



This symbol shows you what you must be careful with.

\*'Property damage' refers to damage affecting dwellings, household belongings, or domestic animals and pets.

## **DANGER (Use and storage)**

- **The following individuals should not use the device:**

Failure to comply may cause malfunction of medical electronic device.

- ◆ Individuals using the following types of medical electronic devices:

- pacemakers or other implanted electronic medical devices;
- artificial heart-lung machines or other electronic life-support medical devices; and
- electrocardiographs or other electronic medical devices worn on the body.



**Prohibition**

## **WARNING (Use and storage)**

- **Do not use under the following conditions:**

Failure to comply may cause accidents or other problems.

- If you have existing or suspected heart disease or related disorders
- If you are unable to express your intentions on your own
- If you are unable to sense temperature or stimulation
- If you have an autoimmune disease

Consult a physician prior to use under the following conditions:

- If you have an acute disease
- If you have an infectious disease
- If you have a malignant tumor
- If you have a febrile disease
- If you have high blood pressure or a blood disease
- If you have a fever
- If you have sensory impairment due to severe peripheral circulatory dysfunction (e.g. diabetes)
- If you have nerve damage
- If you have a skin disease or atopic dermatitis
- If you are a hospital outpatient and are taking medication
- If you have a pre-existing skin condition, such as an allergic constitution or contact dermatitis, or if you have a concern about your skin when using the device

- **Do not use in the following cases or on the following areas:**

Failure to comply may cause accidents or other problems.

- If your skin is damaged, experiencing a rash, inflammation, or other abnormalities
- If you are under the influence of alcohol
- Anywhere inside the mouth, around the pubic region, or any mucous membrane
- Eyeballs
- Eyelids (eye sockets)
- Throat
- Bulging moles
- Viral warts
- Areas where you have broken a bone
- Areas of internal bleeding, swelling or scabbing after cosmetic medical procedures

\*Avoid using the device for at least 2 weeks after undergoing any cosmetic medical procedure. After this period, consult a physician and only resume use if the physician confirms it is safe to do so (e.g., hyaluronic acid injections, silicone implants, Botox, thread lifts, double eyelid surgery, HIFU).

- Areas where metal was implanted by surgery (reconstructive surgery, plastic surgery, cosmetic surgery, etc.)



**Prohibition**

## **WARNING** (Use and storage)

- Do not drop the device into water. Do not leave the device in water.

Failure to comply may cause an electric shock, short circuit or fire.



**Prohibition**

- Do not disassemble, attempt to repair or modify the device in any way.

Failure to comply may cause a fire, electric shock, or an injury.

Contact your local distributor for an advice on repairing the device.



**Disassembly prohibited**

- Keep away from children and do not allow them to use the device. Do not allow children to play with the device.

- Do not allow persons who are unable to express their intentions on their own to use the device. Use by unattended people with physical disabilities should be avoided.

Failure to comply may result in an accident or injury.



**User restrictions**

- Do not place the device in an unstable location. Do not drop or strike the device.

Failure to comply may cause a malfunction of the device.

An injury may also be caused if the device is dropped on a foot or other exposed body parts.



**Dropping prohibited**

- Do not use the device for any purpose or in areas other than those stated in the User's Manual.

Failure to comply may result in an injury or malfunction of the device.



**Non-intended uses prohibited**

- Do not use the device when an odor or abnormal overheating is detected.

Failure to comply may cause a damage or an ignition of the device.



**Use prohibited when an odor or abnormal overheating is detected**



## **WARNING** (Use and storage)

- Always check for any signs of irritation on your scalp or skin during treatment.  
If irritation occurs or if the device does not agree with your scalp or skin, stop using it immediately.

Failure to comply may cause skin problems.



**Must Comply**

- If you are currently undergoing dental treatment or have teeth fillings, choose a lower intensity level and apply the device on a different area.

You may feel strong irritation or discomfort by EMS on your cheeks or chin. If you feel strong discomfort, consult a physician.

## **CAUTION** (Use and storage)

- Those with sensitive scalps should monitor their condition during use and strictly follow the recommended usage guidelines.

Excessive use may cause damage to the scalp.

- **The following individuals should not use the device:**

The following individuals should not use the device:

- Failure to comply may cause hair to become tangled and result in damage.
- Individuals wearing partial wigs (including tape-in, braided, or extension-type wigs).

- **Always perform a pre-test before using the device for the first time. When first using the device or until your skin becomes accustomed to it, always start with Level 1.**

Failure to comply may result in an accident or injury. Adjust the level only after your skin has become accustomed to the treatment.

- **Do not allow the device to come into contact with another beauty device or electronic appliance while the power is on.**

Failure to comply may result in an injury or malfunction of the device.

- **Do not use the device together with a hair dryer or use a hair dryer to dry the device.**

Failure to comply may cause deformation or malfunction of the device.

- **Do not use the device on pets.**

Failure to comply may cause injury.

- **Do not look directly into the LED light.**

Failure to comply may cause eye injury.



Prohibition





## CAUTION (Use and storage)

- **Do not use oils, scrubs, or other strongly stimulating products.**

Failure to comply may cause skin problems or malfunction of the device.

- **Do not wipe the device with alkaline cleaners, alcohol, thinner, benzene, nail polish remover, or other solvents.**

Failure to comply may cause damage to the surface of the device.

- **Before use, check that the electrodes are free of scratches, dirt, or other abnormalities. Do not use the device if any damage is found.**

Failure to comply may cause skin problems or malfunction of the device.

- **Do not use the device continuously.**

Excessive continuous use, such as for commercial purposes, may cause the device to overheat.  
Allow at least one hour between uses.

- **Never use the device on prohibited areas (page 4).**

Failure to comply may cause an accident or injury.



Prohibition

## **CAUTION** (Use and storage)

- **Discontinue use immediately if you feel fatigued or notice any abnormalities on your skin or scalp during use.**  
If symptoms persist the following day and beyond, consult a physician.
- **Always follow the recommended usage time. Use for up to 10 minutes per area per session, with a maximum total of 30 minutes per day.**  
Excessive usage may cause damage to the skin or scalp.
- **If you feel a painful sensation on your skin or scalp during use, pause the treatment immediately and apply water or a skincare product between the electrodes and your skin.**  
Failure to comply may cause damage to the skin or scalp.
- **Do not press the device firmly against your scalp.**  
Failure to comply may cause scalp damage.
- **To ensure smooth movement, reapply water or skincare products as needed during treatment to maintain sufficient moisture between the electrodes and your skin.**  
Failure to comply may cause skin damage.
- **After each use, refer to 'After treatment' (page 28) and wipe off any dirt or moisture from the device.**
- **Before use, check the attachment for any damage or abnormalities such as scratches.**  
**Do not use the device if any abnormality is found.**  
Failure to comply may cause skin problems or malfunction of the device.



**Must Comply**

## **WARNING** (The power supply)

- Do not cut, damage, modify, excessively bend, pull, twist, or bundle the AC adapter or USB cable.

Do not place heavy objects on them or pinch them between other objects. Failure to comply may cause fire or electric shock.



Improper  
handling  
prohibited

- Do not use the AC adapter if it is damaged or if the plug fits loosely in the outlet.

Failure to comply may cause electric shock, short circuit, or fire. Contact your local distributor for an advice on repairing the device.



Use of damaged  
AC adapter  
prohibited

- Plug the AC adapter directly into a wall outlet. Do not connect it via multi-plug adapters.

Failure to comply may cause electric shock, short circuit, or fire.



Overloading of  
an electric circuit  
is prohibited

- Always turn off the device and unplug the AC adapter before cleaning.
- When not in use, always turn off the device and unplug the AC adapter. Do not plug in or unplug the adapter with wet hands.

Failure to comply may cause electric shock, short circuit, or fire.



Unplugging  
the AC adapter

- If any abnormality occurs, such as smoke, strange sounds, or odor, immediately turn off the device and unplug the AC adapter.

Do not continue to use the device while it is in an abnormal state.

- When unplugging the AC adapter from an outlet, always hold the plug securely by its sides to remove it.

Failure to comply may cause electric shock, short circuit, or fire.



Unplugging  
the adapter

## **WARNING** (The power supply)

- Do not use or leave the device near open flames, in direct sunlight, or in dusty areas. Do not throw the device into fire, heat it, or expose it to high temperatures. Do not charge, use, or store the device in hot environments. Keep the device away from heating appliances.



Fire hazard  
warning

- Always check that the plug configuration and voltage match the specifications before use.

This device contains a built-in rechargeable battery. Failure to comply may cause overheating, fire, or explosion.

- Use only with an AC voltage of 100 V to 240 V. Make sure the AC adapter is fully inserted into the outlet.



Must Comply

Failure to comply may cause fire, electric shock, or malfunction of the device.

## Names and Functions of Components

The design and specifications of the device and included accessories are subject to change for improvement purposes without notice.

### Accessories

- AC adapter
- Charging base (with USB cord)\*
- User's Manual
- Attachments (scalp/facial)

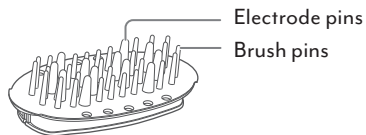
\*Do not use these accessories with any products other than Medi Lift Plus.

### Attachment

#### ● Scalp attachment

For dedicated use with scalp.

\*It is attached to the main unit at the time of purchase.



#### ● Facial attachment

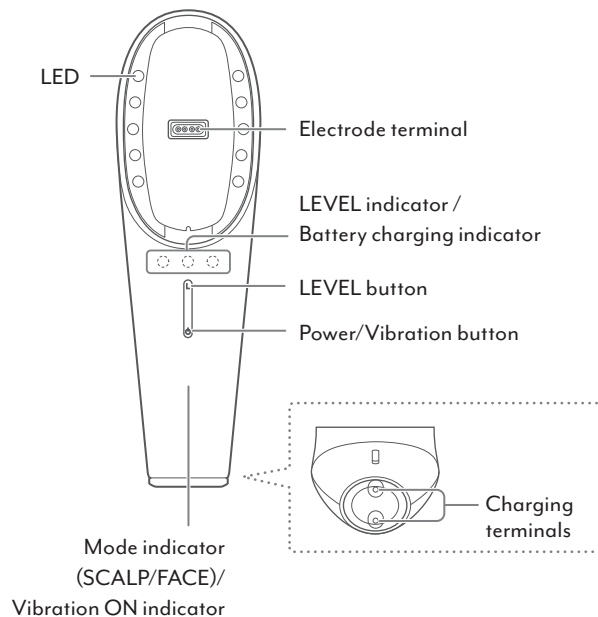
Can be used on your face, neck, or decollete.



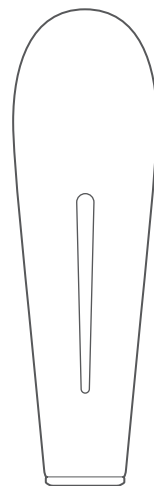
Attachments can be easily attached and detached with the magnetic system. For details, refer to 'How to remove and attach' on page 16.

## Main unit

### ● Front view



### ● Back



## Functions

### Auto Power Off

The device will automatically switch off approx. 10 minutes after it has been turned on.

### EMS

Delivers electrical stimulation to the muscles.

### Photo

Treats your scalp and skin LED Photo treatment.

### Micro-currents

A gentle electrical current treats your scalp and skin.

### Vibration

Supports skincare by gently tapping your scalp and skin with gentle vibration.

### Waterproof

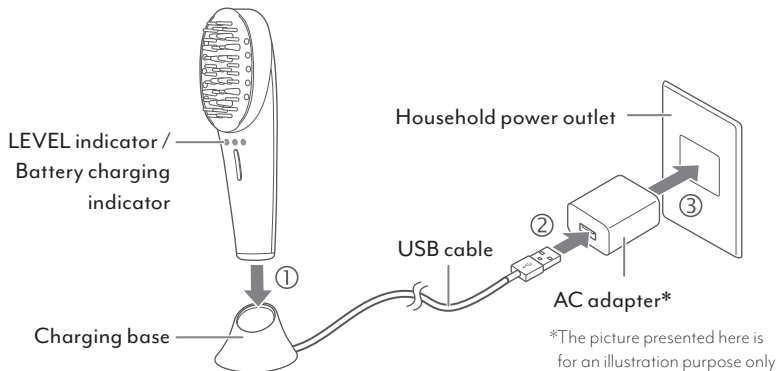
This product is IPX5 level waterproof (JIS waterproof protection class).

\*The device is not completely waterproof. Do not immerse the device in water or leave it continuously under running water for 3 minutes or longer.

\*The AC adapter and charging base are not waterproof.

## ■ Before Use

### Charge the Device



Charging	LEVEL indicator / Battery charging indicator flash
When charging is complete	LEVEL indicator / Battery charging indicator illuminate
Charging Time	Approx. 3 hours (room temperature approx. 25°C)
Operating time	Approx. 30 minutes

\*Actual charging time and operating time may vary depending on the remaining battery level and the charging conditions.

- Please attach the main unit in the correct orientation. Charging will not begin if the magnetic charging terminal is attached in a wrong direction.
- Place the device so that it touches the charging terminal of the charging base.
- Fully charge the battery before using the device for the first time after purchasing.
- When using the device for the first time or when the device has not been used for an extended period of time, it is possible that you will be able to use the device for a short time only, even with a full charge. In such a case, charge the controllers again before using it.

## CAUTION

- The charging base is not waterproof.

**If there are any water droplets on the charging terminals, be sure to wipe them off thoroughly with a cotton swab or similar item before charging.**

Charging the device while moisture remains may cause malfunction.





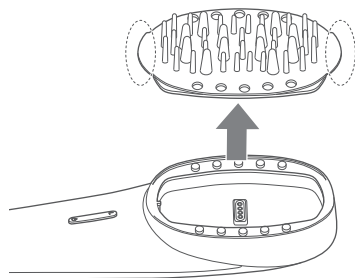
## How to remove and attach an attachment

Switch between the scalp attachment or facial attachment according to the use.

- Scalp attachment: Exclusively for the scalp.
- Facial attachment: Can be used on your face, neck, or décolleté.

### ● How to attach

- 1 To remove, place your fingers on the upper and lower protrusions of the attachment and lift it off**



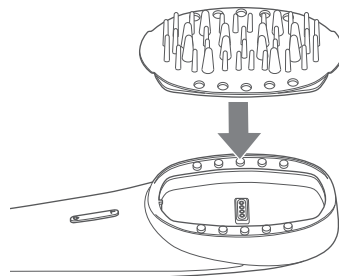
### ● How to remove

- 1 Fit the attachment onto the main unit**

- Attachments are magnetic.
- The mode (SCALP mode/FACE mode) switches automatically.

\*Attachments have different shapes at the top and bottom, which determine the orientation they can be attached. Do not force them into place.

\*When attaching, be careful not to pinch your fingers.



## Areas of use

This product is a beauty device specifically for the scalp, face, neck, and decollete.

\*Do not use on areas other than scalp, face, neck, and decollete.

## Switching modes

There are two modes:

- SCALP mode: Stimulates scalp muscles and stretches the entire scalp. Use the scalp attachment.
- FACE mode: Stimulates facial muscles for skin firming care. Use the facial attachment.

After setting the attachment, the device will automatically switch the mode.

\*For attachment methods, refer to 'How to remove and attach' on page 16.

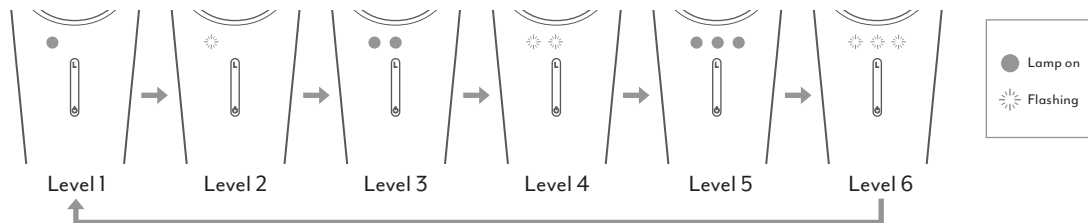
## Selecting the EMS Level

There are 6 EMS intensity levels, from Level 1 to Level 6. Each time the LEVEL button is pressed, the level switches to the next setting.

Always start with Level 1 when using the device for the first time.

\*Increasing the level will increase the EMS output intensity.

\*There are no adjustable levels for the LED brightness, vibration, or micro-current.



## Pre-test for skin compatibility

When using the device for the first time, always perform a skin compatibility test to help prevent irritation or other skin problems.

- Use the scalp attachment.

### 1 Clean the skin

- Wash the inside of your arm with soap and water, then rinse and dry it thoroughly with a towel.

### 2 Wet the inside of your arm with water, turn on vibration, set the device to SCALP Mode, and move it gently over the skin for approx. 1 minute

- Use Level 1 for the test.
- Do not rub the tested area after use.



### 3 Only proceed with regular use if no signs of redness, warmth, or other abnormalities appear within 24 hours.

## CAUTION

- If you experience a rash, redness, itching, stinging, or other irritation at the test site, stop the test immediately and wash the area thoroughly.
- Always monitor your skin carefully during use. If the device does not agree your skin, stop using immediately.

## Automatic Power-off

This device will automatically turn off.

The power will turn off automatically approx. 10 minutes after operation begins in any mode.

- Even if the intensity level is changed during treatment, the device will turn off approx. 10 minutes after the mode was first started.

\*If the mode is changed during treatment, the device will turn off approx. 10 minutes after the mode was switched. Please keep track of your usage time.

- To manually turn off the device during use, press and hold the Power/Vibration button for approx. 1 second.

## ■ How to Use

### Recommended Usage

- Use for up to 10 minutes per area per session, with a maximum total of 30 minutes per day. The device is suitable for daily use.
- If using the device on consecutive days, allow at least 24 hours between sessions.

\*These are general guidelines. Please monitor the condition of your scalp and skin during use.

\*Excessive usage may cause damage to the scalp or skin.

### Preparation

#### 1 Clean your scalp or skin

- Always remove makeup before using the device on your face.

#### 2 Check that there are no abnormalities such as pimples, breakouts, or other issues on your scalp or skin

---

### CAUTION

- Do not use the device on areas of the scalp or skin that show signs of abnormalities.
- If you experience any abnormalities on your scalp or skin during use, stop using the device immediately and consult a dermatologist.

### 3 Select an attachment and attach it to the main unit

- The mode (SCALP mode/FACE mode) switches automatically.
- For attachment methods, refer to 'How to remove and attach' on page 16.

### 4 Wet the scalp or skin

- Scalp: Water, shampoo, hair treatment, or similar products
- Skin: Water, lotion, gel, or similar products

---

## CAUTION

- Do not use the scalp attachment on areas other than the scalp.
- Do not use the facial attachment on areas other than the face, neck, and decollete.
- Do not use oils, scrubs, or other strongly stimulating products. Failure to comply may cause product malfunctions or skin problems.

## How to Use the Device in Each Mode

### ● SCALP mode (EMS + Photo (red LED) + Micro-current + Vibration ON/OFF option)

- Use the scalp attachment.
- We recommend that you use the device when the scalp is wet with water, etc., or while bathing with shampoo lathered throughout the hair.

**1** Hold down the Power/Vibration button for approx. 1 second to turn on the power

**2** Press the Power/Vibration button to select vibration ON/OFF

- Press the Power/Vibration button again to turn vibration off.

**3** Select your choice of EMS level (intensity)

- Each time the LEVEL button is pressed, the EMS level switches to the next setting.



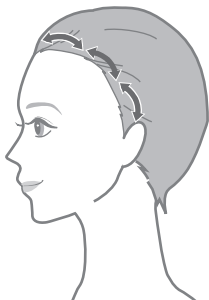
## CAUTION

- When using the device for the first time or until you become familiar with it, always start with level 1.
- Do not drop the device into water.
- Do not immerse the device in water.

Failure to comply may cause a malfunction of the device, an accident or injury.

## 4 Ensure that all brush pins and electrode pins contact the scalp, and move slowly along the arrows

\*Do not use on areas other than the scalp.



Move the device in small zigzags around the frontalis muscle and temporal muscle.



Move the device slowly from the hairline toward the back of the head as if combing the hair.

### CAUTION

- Do not press the device firmly against your scalp.  
Failure to comply may cause scalp damage.
- To ensure smooth movement, reapply water or skincare products as needed during treatment to maintain sufficient moisture between the electrodes and your scalp.  
Using the device on a dry scalp may cause scalp damage.
- Do not use oils, scrubs, or other strongly stimulating products.  
Failure to comply may cause skin problems or a malfunction of the device.



- 5** When treatment is finished, press and hold the Power/Vibration button for approx. 1 second to turn off the power

#### Points to note when using the device and how to place the device on the scalp

- Wetting the scalp first with water, shampoo, or hair treatment allows for smoother movement.
- We recommend using the device slowly, tracing from the hairline toward the crown. If the scalp becomes dry, reapply water, shampoo, or hair treatment.
- We recommend using the device after warming the scalp with a hot steamed towel or after bathing when the scalp is warm.
- Gently press the brush pins and electrode pins perpendicular to your scalp so that all of the pins touch your scalp.
- Do not press the roller strongly.



● **FACE mode (EMS + Photo (red LED) + Micro-current + Vibration ON/OFF option)**

- Use the facial attachment.
- We recommend using the device in the bath or moistening your skin with water, lotion, or gel before using the device.
- Be sure to remove makeup before using the device.

**1** Hold down the Power/Vibration button for approx. 1 second to turn on the power

**2** Press the Power/Vibration button to select vibration ON/OFF

- Press the Power/Vibration button again to turn vibration off.

**3** Select your choice of EMS level (intensity)

- Each time the LEVEL button is pressed, the EMS level switches to the next setting.




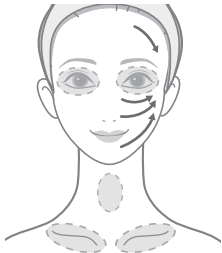
**CAUTION**

- When using the device for the first time or until you become familiar with it, always start with Level 1.
- Do not drop the device into water.
- Do not immerse the device in water.

Failure to comply may cause a malfunction of the device, an accident or injury.

**4 Ensure that all soft electrode pins contact the face, and move slowly along the arrows**

 Areas you should not treat: Eyelids, around the eyes, Adam's apple, collarbone



**5 Treating the neck and décolleté**

\*Use the device with continuous gliding motion.

\*Always start at Level 1 when using the device for the first time.



**Points to note when using the device and how to place the device on the face**

- Gently press the soft electrode pins perpendicular to your skin so that all of the pins touch your skin.
- Do not press the roller strongly.



- 6 When treatment is finished, press and hold the Power/Vibration button for approx. 1 second to turn off the power

## ■ After Treatment

### How to Clean (Main Unit)

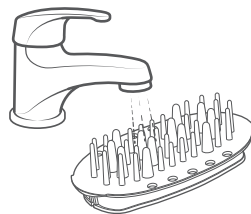
Clean the device after each use to maintain hygiene.

Remove the attachment from the main unit.

**1** Make sure the device is turned off

**2** Rinse off any hair or dirt from the main unit

**3** Rinse the attachment under running water to remove any dirt



## CAUTION

- Always turn off the device before cleaning.

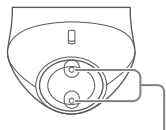
Failure to comply may cause an electric shock, short circuit, fire, or malfunction of the device.

## 4 Wipe off any dirt from the surface of the device and moisture from the attachment using a towel or dry cloth

- If stubborn dirt remains, gently wipe with a cloth dampened with diluted neutral detergent.

**\*Be especially sure to wipe off all moisture from the charging terminals and electrode terminals.**

Leaving the device wet or charging it while wet may cause malfunction. If there are any water droplets on the charging terminals, thoroughly wipe them off with a cotton swab or similar item before charging.



Charging terminals

## 5 Dry the device in a location that is well ventilated

- Do not leave the device with lotion, gel, or similar products on its surface.
- Do not use alkaline cleaners, alcohol, thinner, benzene, or nail polish remover.
- Never immerse the device in water. Do not use hot water. Failure to comply may cause a malfunction of the device.
- Do not leave the device immersed in water or bathwater. Failure to comply may cause a malfunction of the device.



## CAUTION

- If you use non-oil-based shampoo or hair treatment, be sure to rinse the device thoroughly with water. Failure to comply may cause discoloration or deterioration of the main unit or peeling of the coating.
- Do not use the device in hot springs (spas) and warm water containing bath salts. If the device comes into contact with such water containing bath salts, rinse it thoroughly with water. Failure to comply may cause odor or discoloration.
- Always wipe off any moisture from the device after use. Do not leave the device in high-temperature or humid locations such as bathrooms. Leaving the device wet may cause the charging terminals to corrode.

## Storing the Device

- When not using the device for an extended period, clean it before storage.
- Be sure to wipe off any dirt from the main unit and electrode terminals before storage.
- When not in use, turn off the power and unplug the AC adapter from the wall power outlet before storing.
- Do not leave the device near fire or flame, under direct sunlight, or in hot and humid environments such as bathrooms.

Store only in a clean, well-ventilated places.

- Keep the device out of the reach of children.

## Maintenance and Inspections

- If the device has not been used for a long time, be sure to inspect it carefully and check that the device works properly and safely before restarting use.
- If the device is malfunctioning, go to 'Checklist for Possible Problems' (pages 31 to 32) and attempt to identify the problem before arranging to have the device repaired. If the problem persists, contact your local distributor, making sure that you have your purchase details ready when you call.
- If the device malfunctions, appears damaged or needs service, please contact your local distributor.

## Additional Information

### Checklist for Possible Problems

If you notice an abnormality during use, check for the following symptoms.

Symptom	Possible causes and solutions
The device does not turn on	● The power will not turn on if no attachment is attached. Hold down the Power/Vibration button for approx. 1 second after attaching the attachment (page 16, page 22).
	● The battery may be depleted. Charge the battery (page 15).
The device only operates for a few minutes even after charging	● The battery is low. Charge the battery (page 15).
	● The battery has expired. Inquiry the Global After Service ( <a href="https://www.ya-man.co.jp/en/support/repair/">https://www.ya-man.co.jp/en/support/repair/</a> ) or your local distributor. *Do not try to replace the battery by yourself because this may cause a malfunction of the device.
The device does not start charging	● Connect the AC adapter to a power outlet (page 15).
	● The orientation of the main unit is incorrect. Please place the main unit on the charging base in the correct orientation.
EMS feels weak (no sensation)	● Increase the EMS intensity with the Level button (page 17).
	● The electrode pins are not properly in contact with the skin. Please apply the device correctly (pages 24 and 26).
	● Your skin is too dry. Moisturize your skin with water, lotion, gel, or similar products before using the device.



Symptom	Possible causes and solutions
EMS feels too strong (painful)	● Lower the EMS intensity with the Level button (page 17).
	● Your skin is too dry. Moisturize your skin with water, lotion, gel, or similar products before using the device.
The device does not move smoothly	● Your scalp is too dry. Moisten the scalp with water, shampoo, or hair treatment.
	● Your skin is too dry. Moisturize your skin with water, lotion, gel, or similar products before using the device.
The device won't stay on	● If the attachment is not attached correctly, the power will turn off. Please attach it correctly.
	● The device will automatically turn off approx. 10 minutes after being powered on. When using continuously, hold down the Power/Vibration button for approx. 1 second again to turn the power on.
Stimulation varies in intensity	● The output changes from EMS to micro-current. Therefore, stimulation may not be constant. Also, keep your skin moisturized with water, lotion, gel, or similar products to prevent dryness.

## Frequently Asked Questions

**Q** My scalp becomes red

**A**

Rubbing strongly with the brush pins and electrode pins may cause scalp damage. Be sure to slide the device lightly over the scalp. Also, reapply moisture during treatment to ensure there is always moisture between the electrode pins and the scalp.

**Q** The main unit is difficult to move

**A**

If the scalp surface is dry, the main unit may not be able to move over the scalp smoothly. For effective treatment, thoroughly wet the scalp with water before using this product. Also, if you have long hair, brush it to untangle before use.

**Q** How should I clean and store the device?

**A**

- Wipe the surface of the device thoroughly with a dry cloth before storing it (pages 28–29).
- Remove the attachment from the main unit and rinse it under running water. Do not immerse the device in water during cleaning.
- Do not keep the device in hot or humid places.

**Q** Can I use the device in the bathroom?

**A**

Yes, the device can be used in the bathroom. However, do not immerse it in water or expose it to running water for more than 3 minutes. Also, do not charge the device in the bathroom.

**Q** Will I feel a tingling sensation on my scalp?

**A**

Some individuals may feel a slight tingling sensation caused by the micro-current, depending on personal sensitivity. If you experience any discomfort on your scalp, stop using the device and consult a dermatologist.

**Q** Can I use the device with hair styling products?

**A** To avoid skin problems, use on clean hair and scalp.

**Q** Can I use something other than water during treatment?

**A** Yes, you may use shampoo, hair treatment, or hair lotion (excluding oil-based types) on the scalp, and facial lotion or gel on the face. Do not use oils, scrubs, or other strongly stimulating products. Failure to comply may cause skin problems or malfunction of the device.

**A** <Products not suitable for use>

- Oil-based products
- Scrub-type products
- Strongly stimulating products (such as certain shampoos, hair treatments, or facial lotions)

**Q** Does the EMS stimulation fluctuate and sometimes weaken?

**A** The output changes from EMS to micro-current.  
At that time, you may feel the stimulation weakening.

**Q** Does the sensation of stimulation vary by area even at the same EMS level?

**A** Since EMS is a function that stimulates muscles, some areas may be less sensitive to stimulation.

**Q** How often can I use the device?

**A** Use for up to 10 minutes per area per session, with a maximum total of 30 minutes per day. The device is suitable for daily use.

\*If using the device on consecutive days, allow at least 24 hours between sessions.

## Product Specifications

<b>Rated Power Supply</b>	DC5V 1.0A
<b>Power Consumption</b>	Maximum approx. 3 W (when charging)
<b>Battery</b>	Lithium-ion battery
<b>Charging Time</b>	Approx. 3 hours (Actual charging time may vary with conditions of the charging environment.)
<b>Operating time</b>	Approx. 30 minutes (from a fully charged state) (Operating time may vary with conditions of use and the EMS level.)
<b>Outer Dimensions</b>	Approx. W54×D180×H56 (mm) *With scalp attachment attached Facial attachment: Approx. W48×D89×H25 (mm)
<b>Weight</b>	Main unit: Approx. 123 g   Scalp attachment: Approx. 44 g   Facial attachment: Approx. 39 g
<b>Materials</b>	Main unit: ABS resin   Charging base: ABS resin   Scalp attachment: ABS resin and stainless steel Facial attachment: ABS resin, stainless steel, and silicone
<b>Country of Origin</b>	China
<b>Accessories</b>	Scalp attachment: One Facial attachment: One One AC adapter Charging base (with USB cord: approx. 1 m length): One

## ■ After-sales Service

### Rechargeable battery

- This appliance contains batteries that are non-replaceable.
- The rechargeable battery is a consumable item (not covered by the product warranty).
- The battery is expected to last 300 charge cycles. If the device no longer operates for more than a short period of time even after the battery has been recharged, the battery may have reached the end of its service life.
- For a battery replacement, please contact customer service.

### Disposing of the device

- Follow your local government rules for proper disposal of this product.
- This product uses a lithium-ion battery.



### Correct Disposal of this product

- This marking indicates that this product should not be disposed with other household wastes throughout the UK and EU. To prevent possible harm to the environment or human health from uncontrolled waste disposal, recycle it responsibly to promote the sustainable reuse of material resources. To return your used device, please use the return and collection systems or contact the retailer where the product was purchased. They can take this product for environmental safe recycling.



### Contacts for overseas customers

- For countries and regions outside Japan, please contact the store where you purchased your product for any inquiries.  
Alternatively, check the YA-MAN GLOBAL Official Website (<https://www.ya-man.com/en/>)  
Official website: <https://www.ya-man.com/en/>

**Memo**



