

YAMAN

TOKYO JAPAN

User's Manual

YA-MAN SPA STYLER
STRAIGHT + WAVE
YJHB0US

Congratulations on your purchase and thank you!

- Be sure to read the Safety Precautions (pages 3-9) before use.
- Please read this User's Manual carefully for information on how to use the Flat Iron properly and safely.
- After reading the contents hereof, be sure to keep this User's Manual in an accessible location.
- Make sure to include this User's Manual if you are transferring ownership of the Flat Iron to another person.
- Please keep the product away from water.
- Do not use in the bathtub or shower.
- This product is for household use.

Memo

Table of Contents

IMPORTANT SAFETY INSTRUCTIONS — p3

GENERAL DESCRIPTIONS — p11

OPERATING INSTRUCTIONS — p12

● BEFORE OPERATING — p12

● HOW TO USE — p13

MAINTENANCE (AFTER USE) — p17

NOTICE — p19

● TROUBLESHOOTING — p19

● FAQ — p20

DISPOSAL INFORMATION — p22

IMPORTANT SAFETY INSTRUCTIONS

When using electrical appliances, especially when children are present, basic safety precautions should always be followed, including the following:

READ ALL INSTRUCTIONS BEFORE USING KEEP AWAY FROM WATER

- Read these Safety Precautions carefully before using the Flat Iron in order to use it correctly.

Classifications of Precautions



DANGER

Improper use of this Flat Iron may pose a risk of death or serious injury.



WARNING

Improper use of this Flat Iron may cause an injury or property damage*.

* 'Property damage' refers to damage affecting dwellings, household belongings, or domestic animals and pets.

Symbols



This symbol shows you what you must not do.



This symbol shows you what you must do.



This symbol shows you what you must be careful with.

DANGER (To reduce the risk of electrocution)

1. Always unplug this appliance immediately after using.
2. Do not use while bathing.
3. Do not place or store appliance where it can fall or be pulled into a tub or sink.
4. Do not place in or drop into water or other liquid.
5. Do not reach for an appliance that has fallen into water. Unplug immediately.

WARNING (To reduce the risk of burns, electrocution, fire, or injury to persons)

1. An appliance should never be left unattended when plugged in.
2. Close supervision is necessary when this appliance is used by, on, or near children or individuals with certain disabilities.
3. Use this appliance only for its intended use as described in this manual. Do not use attachments not recommended by the manufacturer.
4. Never operate this appliance if it has a damaged cord or plug, if it is not working properly, or if it has been dropped, damaged, or dropped into water. Return the appliance to a service center for examination and repair.
5. Keep the cord away from heated surfaces. Do not wrap the cord around the appliance.
6. Never block the air openings of the appliance or place it on a soft surface, such as a bed or couch, where the air openings may be blocked. Keep the air openings free of lint, hair, and the like.
7. Never use while sleeping.
8. Never drop or insert any object into any opening or hose.
9. Do not use outdoors or operate where aerosol (spray) products are being used or where oxygen is being administered.
10. Do not use this appliance near bathtubs, showers, basins or other vessels containing water.
11. Do not use an extension cord with this appliance.
12. This Flat Iron and clip are hot when in use. Do not let eyes and bare skin touch heated surfaces.
13. Do not place the heated flat iron directly on any surface while it is hot or plugged in.



WARNING (Use and storage)

- Do not use, store or charge the Flat Iron in the following locations:

- A dusty location
- Outdoors or a location where there is exposure to direct sunlight
- A slope or a location where there are vibrations or shocks
- A location where there are strong radio waves or magnetism
- Near a flammable substance (such as alcohol, thinner, benzene, nail polish remover or spray).
- A location that may become hot, such as near a heating Flat Iron (e.g. a heater)
- A location with drastic temperature changes (e.g. near an air conditioner or heater)

Failure to comply may cause a fire, electric shocks, accidents, malfunction of the Flat Iron, falls or injuries.

- Before use, check for cracks, deformation, or breakage, and do not use if broken or malfunctioning.

Failure to comply may cause injuries or skin problems.

- Do not apply hair spray directly on the Flat Iron during use.

Failure to comply may cause a fire, electric shock, malfunction or skin burns.

- Do not use if the power cord is broken.

Do not try to dismantle or modify the Flat Iron and consult the distributor where you purchased it.



Prohibition

WARNING (Use and storage)

- Do not overuse the Flat Iron.
For usage time and frequency, follow the instructions in the User's Manual.
Failure to comply may cause physical injuries.
- Do not pull out the plug from a power outlet or pull out the plug from the Flat Iron during use.
Failure to comply may cause an electric shock or a fire due to a short circuit.
Be sure to turn off the power before pulling out the plug.
- Do not leave the Flat Iron unattended while it is turned on.
Failure to comply may cause a fire or other accidents.



Prohibition

- Children should obtain the consent of their guardians before using the Flat Iron and should only use it under the supervision of a guardian or a specialist.
Failure to comply may cause accidents or injuries.
- Keep the Flat Iron away from children and do not allow them to use it alone. Children shall not play with the appliance.
Failure to comply may cause accidents or injuries.



User
restrictions

- Do not use this Flat Iron in a bathroom or near a bath, shower, basin, or other container holding water.
Failure to comply may cause electrocution, shorting, or malfunction.
- Do not douse the Flat Iron with water or submerge it in water. Do not use in places where the Flat Iron could come into contact with water or in very humid places.
Failure to comply may cause a fire, electric shock, or malfunction of the Flat Iron.



Do not
use in wet
areas

WARNING (Use and storage)

- Do not disassemble, attempt to repair or modify this Flat Iron in any way.

Failure to comply may cause a fire, an electric shock or other injuries.

Contact your local distributor for advice on repairing the Flat Iron.



Disassembly
is prohibited

- Do not use the Flat Iron for any purpose or in areas other than those stated in the User's Manual.

Failure to comply may cause a malfunction of the Flat Iron or injuries.



Non-intended
uses are
prohibited

- If the Flat Iron is dropped or damaged, turn off the power immediately, pull out the plug, and request a repair/inspection.

Failure to comply may cause a fire or electric shock.



Must Comply

- When disconnecting the plug from a power outlet, be sure to pull it out by grasping its head instead of the cord (do not touch the metal parts). Do not insert or disconnect the plug with wet or damp hands.

Failure to comply may cause an electric shock, short circuit, fire, or malfunction of the Flat Iron.

- If you feel an earthquake, see lightning or hear thunder, turn off the power and unplug the Flat Iron. Failure to comply may cause a fire or electric shock.

- After using the Flat Iron, when the Flat Iron is not in use and when cleaning it, be sure to turn off the power and remove the plug from a power outlet. Failure to comply may cause a fire or other accidents.



Removing
the plug

DANGER (Use and storage)

- Do not touch the hot parts of the Flat Iron directly with skin, hands, or fingers.
Failure to comply may cause skin burns or other injuries.
- Do not use in combination with perming solutions or any product containing similar ingredients (products labeled with thioglycolic acid, cysteine, etc.).
Failure to comply could cause noticeable damage to the hair, hair breakage, or skin problems.
- Do not allow the Flat Iron to come into contact with another beauty Flat Iron or electronic appliance while the power is on. Do not use with other electronic products (electric blankets/bed sheets, heated tables, etc.) at the same time.
Failure to comply may lead to accidents due to malfunctions.
- Do not use while driving.
Failure to comply may cause accidents or injuries.



Prohibition

- If a power failure occurs, turn off the power immediately and unplug the Flat Iron from the power outlet.
Failure to comply may cause an accident.



Removing
the plug

WARNING (Power source)

- Always use the dedicated power cord.
Failure to comply may cause an electric shock, a short circuit or a fire.



Prohibition

- Do not damage or modify the power cord. Do not apply unnecessary force, bundle or twist.
Failure to comply may cause the cable to break, resulting in a fire or an electric shock. Straighten out any twists in the cord before storing.



Careless or reckless use is prohibited

- Do not exceed the rated capacity of a power outlet or wiring accessory (do not connect too many plugs to one outlet).
Failure to comply may cause an electric shock, short circuit, fire, or malfunction of the Flat Iron.



Overloading of an electric circuit is prohibited

- Be sure to use the Flat Iron in an operating voltage of AC100-240V. Make sure the plug is fully inserted into the power outlet.



Must Comply

Failure to comply may cause a fire, electric shock or accident.

- This appliance has a polarized plug (one blade is wider than the other). As a safety feature, this plug will fit in a polarized outlet only one way.
If the plug does not fit fully in the outlet, reverse the plug. If it still does not fit, contact a qualified electrician. Do not attempt to defeat this safety feature.



Must Comply


SAVE THESE INSTRUCTIONS

Quick Guide

1

Insert plug into the power outlet and turn power button on.



Press and hold the power button until the temperature progress and  appear in red on the LCD screen. When powered on, the default temperature is 360° F.

2

Select a temperature setting that is suitable for your hair type.



Press the temperature (+/-) buttons to select the temperature (280-360°F) that suits your hair type and styling preference.

3

After use, turn off the power.



Press and hold the power button until the LCD screen turns off. The flat iron will automatically shut off after 60 minutes. Allow the flat iron to cool before storing.

GENERAL DESCRIPTIONS

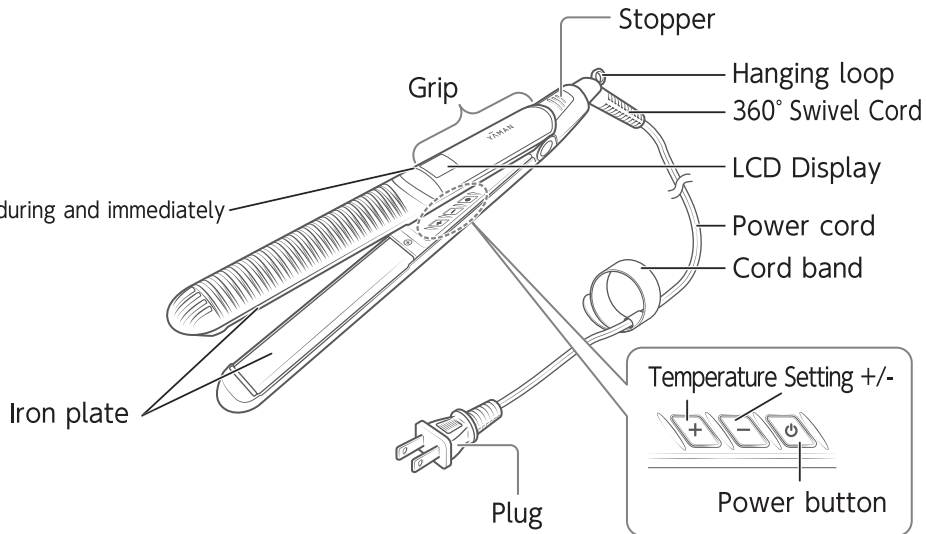
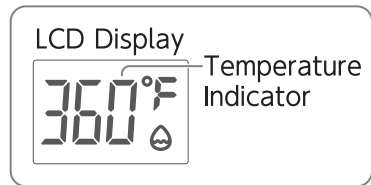
The design and/or specifications of the Flat Iron and its accessories are subject to change without notice for quality improvement reasons.

Accessories

- User's Manual

Flat Iron

*The section from this line to the tip is very hot during and immediately after use, so do not touch.



OPERATING INSTRUCTIONS

■ BEFORE OPERATING

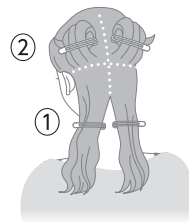
| Preparing your hair

For the best styling results, make sure your hair is dry and tangle-free.

- 1 Comb or brush your hair so it is untangled and smooth.

- Do not attempt to straighten hair if it is wet or tangled.

- 2 Use a comb to divide the hair into sections.



- Style your hair in sections one block at a time.
- For better styling, work in order from the lower blocks to the upper blocks at the back of the head.

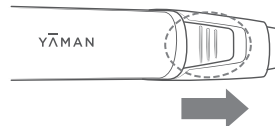
■ HOW TO USE

| Basic Method of Use

1 Insert the plug into the power outlet

Insert the plug into the power outlet with the cord straightened.


2 Unlock the iron plates



Slide the stopper down to unlock by lightly holding onto the grip.

3 Turn on



Press and hold the power button until the temperature progress and  appear in red on the LCD screen.
The default temperature is set to 360°F.

4 Select a temperature setting



- Press the temperature (+/-) buttons to select the temperature (280-360°F) that suits your hair type and styling preference.
- The temperature progress will appear in red on the LCD screen and will change to blue once the selected temperature has been reached.
- The temperature can be adjusted in 20°F increments.

5 Turn off

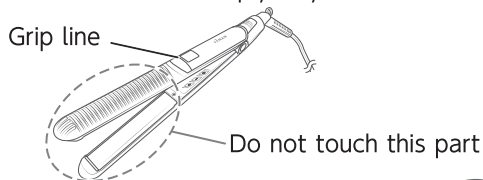


Press and hold the power button until the LCD screen turns off.

- The flat iron will automatically shut off after 60 minutes.
- After the power is turned off, slide the stopper up to close and lock the plates.
- Allow the flat iron to cool before storing.

CAUTION

- The section from the grip line to the tip is very hot during and immediately after use, so do NOT touch it. Failure to comply may cause skin burns.



- Over-styling may cause damage to your hair.
- After each use, refer to “After Use” (page 17) and remove any dirt or styling products, etc. that have attached to the product. Failure to comply may cause the Flat Iron to malfunction or damage your hair.
- Do not keep the iron plate on the same section for longer than 10 seconds. Failure to comply could damage your hair.
- When opening and closing the iron, you may hear a small sound of the spring expanding and contracting.

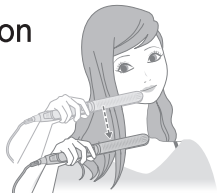
Straightening

- 1 Take a section of hair
1 to 2 inches wide



Take a small section of hair (1 to 2 inches is recommended). If the hair section is too thick, you may not be able to achieve the style that you are aiming for.

- 3 Slide the flat Iron



- While maintaining tension, slowly pull the flat iron down along the hair section toward the end of hair.
- Repeat this process with each hair section until you have achieved the desired style.

- 2 Place the hair
between the plates



Place the hair between the plates and firmly press the handles until the plates touch.

- For the best styling results, make sure your hair is dry and tangle-free.

Curl

- 1 Take a section of hair
1 to 2 inches wide



Take a small section of hair (1 to 2 inches is recommended). If the hair section is too thick, you may not be able to achieve the style that you are aiming for

- 3 Rotate the Flat Iron



Rotate from a half-turn to a full turn, inward for inward curls and outward for outward curls.

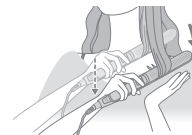
- Gripping the iron too tightly will add stress to the hair and may cause hair breakage.
- Apply heat for approx. 3-5 seconds (varies between individuals).

- 2 Place the hair between the plates



Place the hair between the plates and firmly press the handles until the plates touch.

- 4 Remove the section of hair



As you rotate the Flat Iron, pull the hair out at the tips or open the iron plate and remove the section of hair.

■ MAINTENANCE (AFTER USE)

| Cleaning Your Flat Iron

- 1 Turn the Flat Iron off and remove the plug from the power outlet
- 2 Once the Flat Iron is completely cool, wipe away any surface dirt with a dampened, well wrung cloth
 - For stubborn stains, wipe with a sponge or cloth soaked in a diluted neutral detergent. Wipe again with a clean damp cloth to remove any remaining detergent, then wipe well with a dry cloth.
 - If there is any residue of styling agents, etc. stuck to the Flat Iron, be sure to wipe them it carefully. If left on the Flat Iron, it could cause discoloration or peeling of the surface coating.

CAUTION • Do not wipe the Flat Iron with alcohol, thinner, benzene, nail polish remover, kerosene or other solutions, chemicals, or polishing powders, etc. Failure to comply may cause damage to the surface of the Flat Iron.



- Do not leave any residue of treatment agents or hair styling products, etc. on the Flat Iron. Failure to comply may cause a malfunction of the Flat Iron, deformation, or cracks.
- Cool the Flat Iron down properly before cleaning it. Failure to comply may cause skin burns.

Storing the Flat Iron

- Store in a clean, well-ventilated place out of the reach of children.
- If not using the Flat Iron for a long period of time, clean the Flat Iron before storing it.
- Turn the Flat Iron off and unplug it from the power outlet when not in use.
- Do not store in places that are exposed to heat or humidity (near flames, under direct sunlight, in the bathroom, etc.).
- Do not store the Flat Iron with the power cord wrapped around the Flat Iron body.

Maintenance and Inspection

- If the Flat Iron has not been used for a long period of time, check that it works properly before using it again. Failure to comply may cause an accident or malfunction of the Flat Iron.
- If the Flat Iron stops working properly, before requesting for repairs, refer to “Troubleshooting”(page 19) to confirm the symptoms.
- If the Flat Iron malfunctions or is damaged, consult the distributor where you purchased the Flat Iron.

NOTICE

■ TROUBLESHOOTING

If you notice an abnormality during use, check for the following symptoms.

Symptoms	Likely Cause and Remedy
● Flat Iron won't turn on. ● Flat Iron won't stay on.	● Do not connect too many plugs to one outlet and make sure that the power cord's plug is inserted firmly into a wall socket.
	● If the power cord is damaged, request a repair/inspection.
● The plug is extremely hot.	● If the plug is loose, insert it more firmly into the outlet.
	● Do not connect too many plugs to one outlet and make sure that the power cord's plug is inserted firmly into a wall socket.
● There is a gap when the iron plate is locked.	● The Flat Iron has been designed with a gap of approx. 1 cm between the iron plates in the locked position to discharge heat after use.
● The temperature indicator on the panel fogs up.	● If heat from a heater causes the temperature of the Flat Iron to rise, the humidity in the room may cause condensation inside the panel. It will dissipate gradually after a while.

■ FAQ

Q Can I use this Flat Iron on wet hair?

A Applying the Warm plate to wet hair will generate steam, which could cause skin burns. Always use the Flat Iron on dry hair only.

Q Can I use this Flat Iron on colored hair or hair treated with a hair manicure?

A Do not use on colored hair for approx. 2-3 days after coloring, to allow the pigments to stabilize. For hair that has been treated with a hair manicure, rinse and dry your hair well before use.

Q Can I use this Flat Iron in combination with styling agents?

A You can use this Flat Iron with styling agents as long as they are water-based or water soluble and do not contain perming solution ingredients. Perfumed agents may generate a strange odor when heated so should be avoided.

Q Can I use this Flat Iron in combination with treatment agents?

A Treatment agents, hair oils, etc. can be used either before or after use. Do not apply or spray them directly onto the product. Also, this product does not have a waterproof structure, so use such agents in small quantities so that they do not get inside the product. Perfumed agents may generate a strange odor when heated so care should be exercised.

PRODUCT SPECIFICATIONS

Rated Power Supply	AC100-240V 50/60Hz
Power Consumption	42W
Outer Dimensions	L11.4 x W1.1 x H1.6 in Cord length: 8.5 feet
Weight	Approx. 0.57 lb (excluding power cord)
Set temperature	280°F to 360°F (5 20°F increments)
Materials	PET, polycarbonate, ABS plastic, aluminum, glass, tourmaline
Country of Origin	PRC
Accessories	User's Manual

SERVICING OF DOUBLE-INSULATED APPLIANCES

In a double-insulated appliance, two systems of insulation are provided instead of grounding. No grounding means is provided on a double-insulated appliance, nor should a means for grounding be added to the appliance. Servicing a double-insulated appliance requires extreme care and knowledge of the system, and should be done only by qualified service personnel. Replacement parts for a double-insulated appliance must be identical to the parts they replace. A double-insulated appliance may be marked with the words "DOUBLE INSULATION" or "DOUBLE INSULATED." The symbol (square within a square) may also be marked on the appliance.



DISPOSAL INFORMATION

- Follow your local government rules on separation of trash for proper disposal of this product.

Distributed by
YA-MAN U.S.A. LTD
San Diego, CA 92121
www.ya-manusa.com

©2023 YA-MAN LTD. ALL RIGHTS RESERVED. Unauthorized copying or reproduction is prohibited.

YJHB0US-1-002E